

Zum Vortrag: Bergbahnen in der Schweiz (2./4. 1898)

Fig. 1. Rigi (1871-75), etc.  
(Syst. Rigggenbach).

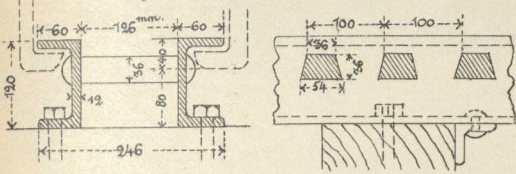


Fig. 2. Brienzer Rothorn (1893) etc.  
(Syst. Abb).

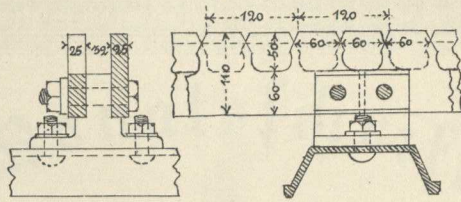


Fig. 3. Bürgenstock (1888).  
(Syst. Abb).

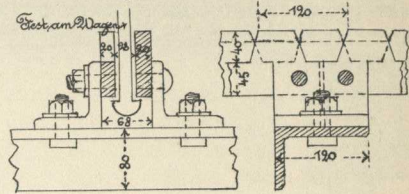


Fig. 4. Jungfrau (Syst. Strub, 1897).

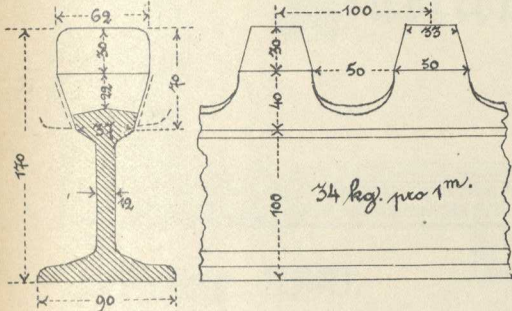


Fig. 5. Silatus (1889). Syst. Locher.

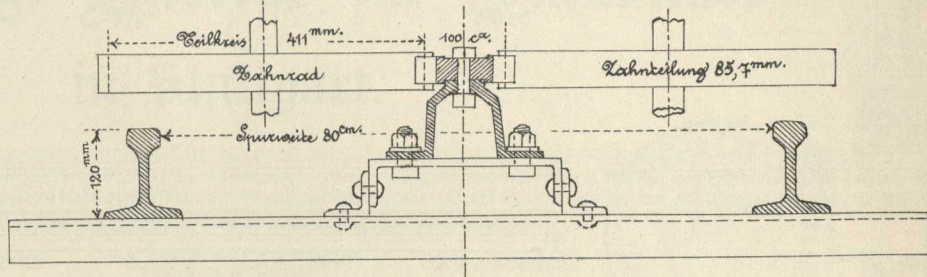


Fig. 6. Ausweiche der zweischinigen Seilbahnen.

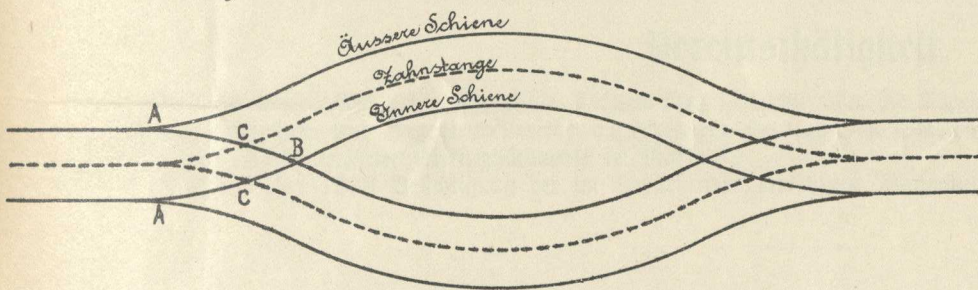


Fig. 9. Seil-Umleitung.

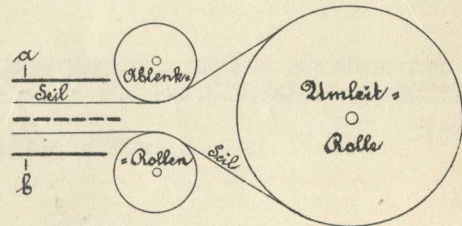


Fig. 7. Ausweiche der dreischinigen Seilbahnen.

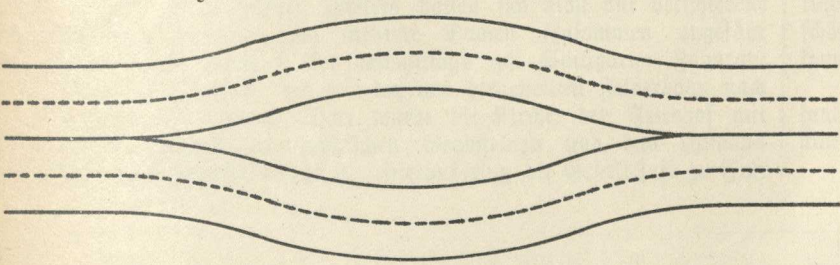


Fig. 8.

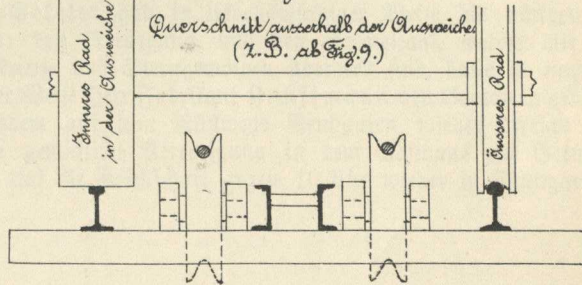


Fig. 11. Stanserhorn (1893).  
(Syst. Bucher).

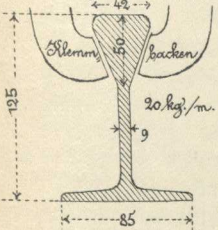
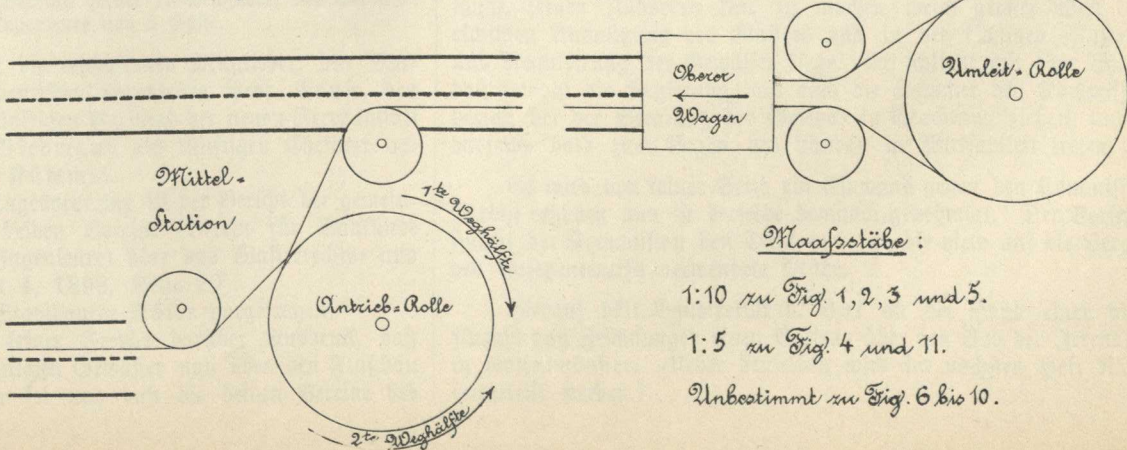


Fig. 10. Monte San Salvatore (1890).



Maassstäbe:

1:10 zu Fig. 1, 2, 3 und 5.

1:5 zu Fig. 4 und 11.

Unbestimmt zu Fig. 6 bis 10.