

Persistenter Identifier: 1466506725020_1898_1904

Titel: Monatsschrift des Württembg. Vereins für Baukunde in Stuttgart

Ort: Stuttgart

Maße: getr. Zählung

Signatur: 2Zb 8710-1898/1904

Strukturtyp: volume

Lizenz: <https://creativecommons.org/licenses/by-sa/4.0/>

PURL: https://digibus.ub.uni-stuttgart.de/viewer/image/1466506725020_1898_1904/1/

Abschnitt: Bergbahnen in der Schweiz. Gleise. Schnitte

Strukturtyp: illustration

Lizenz: <https://creativecommons.org/licenses/by-sa/4.0/>

PURL: https://digibus.ub.uni-stuttgart.de/viewer/image/1466506725020_1898_1904/51/LOG_0030/

Zum Vortrag: Bergbahnen in der Schweiz (2./4. 1898)

Fig. 1. Rigi (1871-75), etc.
(Syst. Riggenbach).

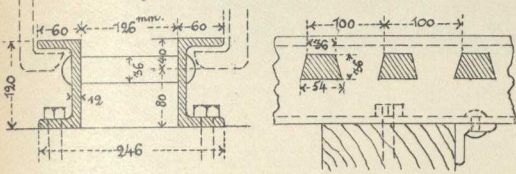


Fig. 2. Brienzer Rothorn (1893) etc.
(Syst. Abbt).

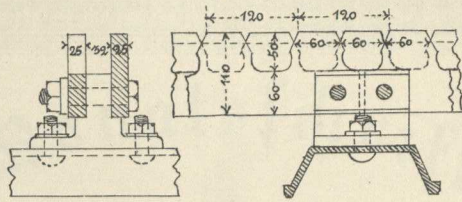


Fig. 3. Bürgenstock (1888).
(Syst. Abbt).

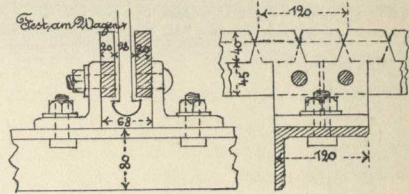


Fig. 4. Jungfrau (Syst. Strub, 1897).

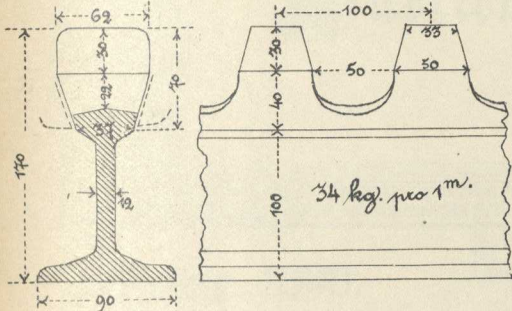


Fig. 5. Pilatus (1889). Syst. Locher.

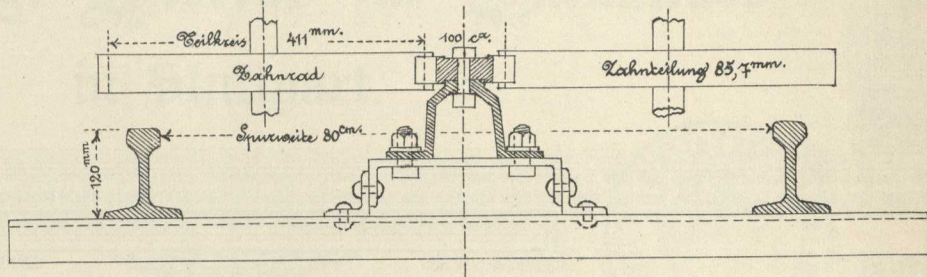


Fig. 6. Ausweiche der zweischiennigen Seilbahnen.

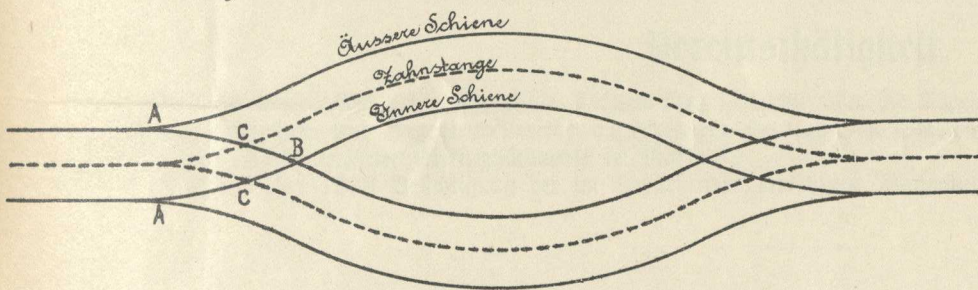


Fig. 9. Seil-Umleitung.

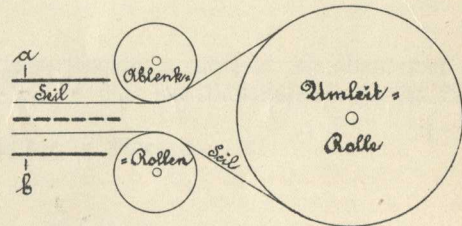


Fig. 7. Ausweiche der dreischiennigen Seilbahnen.

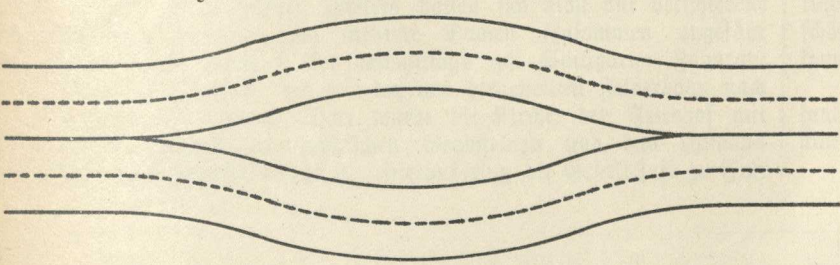


Fig. 8.

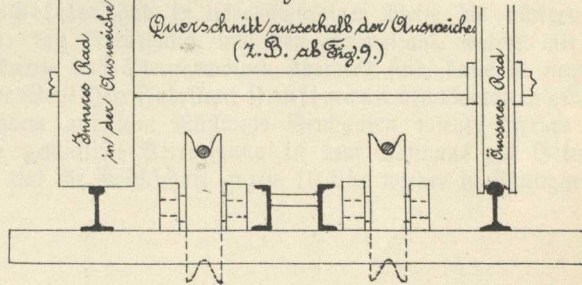


Fig. 11. Stanserhorn (1893).
(Syst. Bucher).

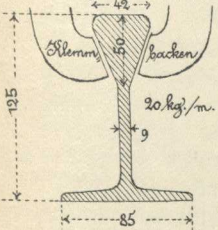
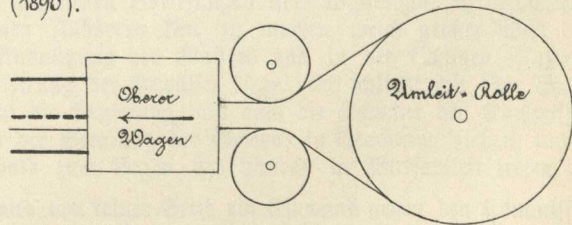
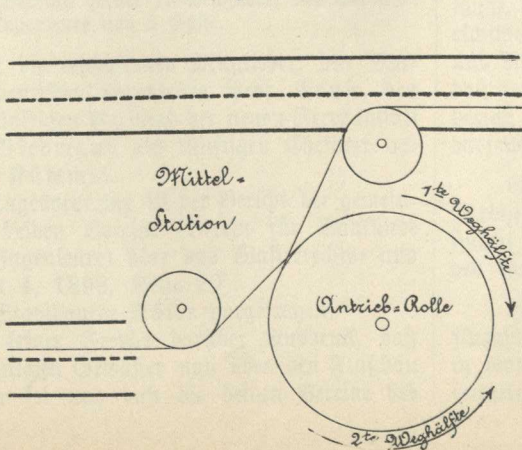


Fig. 10. Monte San Salvatore (1890).



Maassstäbe:

1:10 zu Fig. 1, 2, 3 und 5.

1:5 zu Fig. 4 und 11.

Unbestimmt zu Fig. 6 bis 10.

