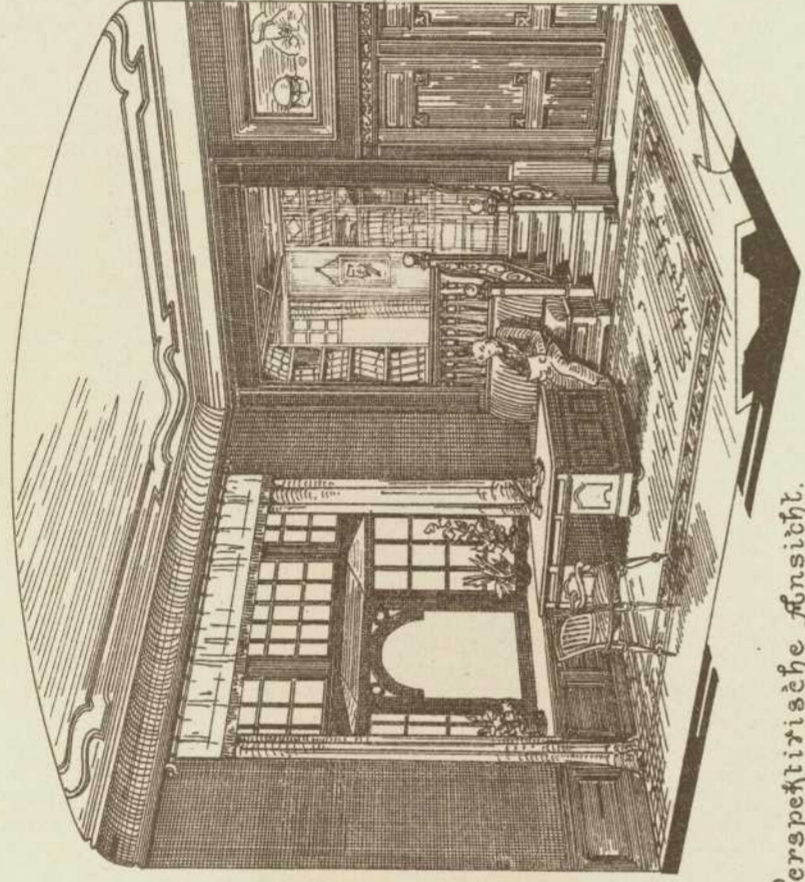
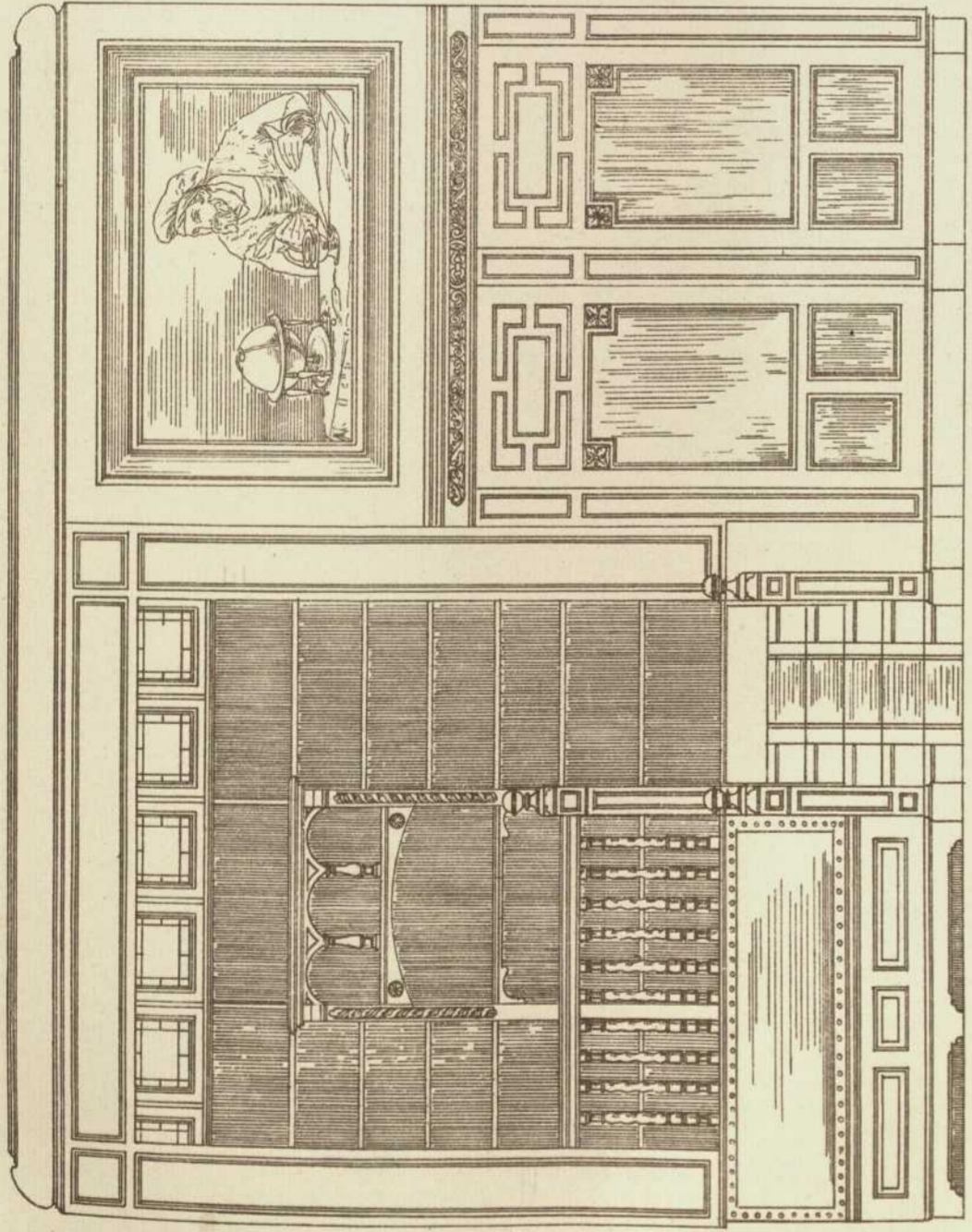
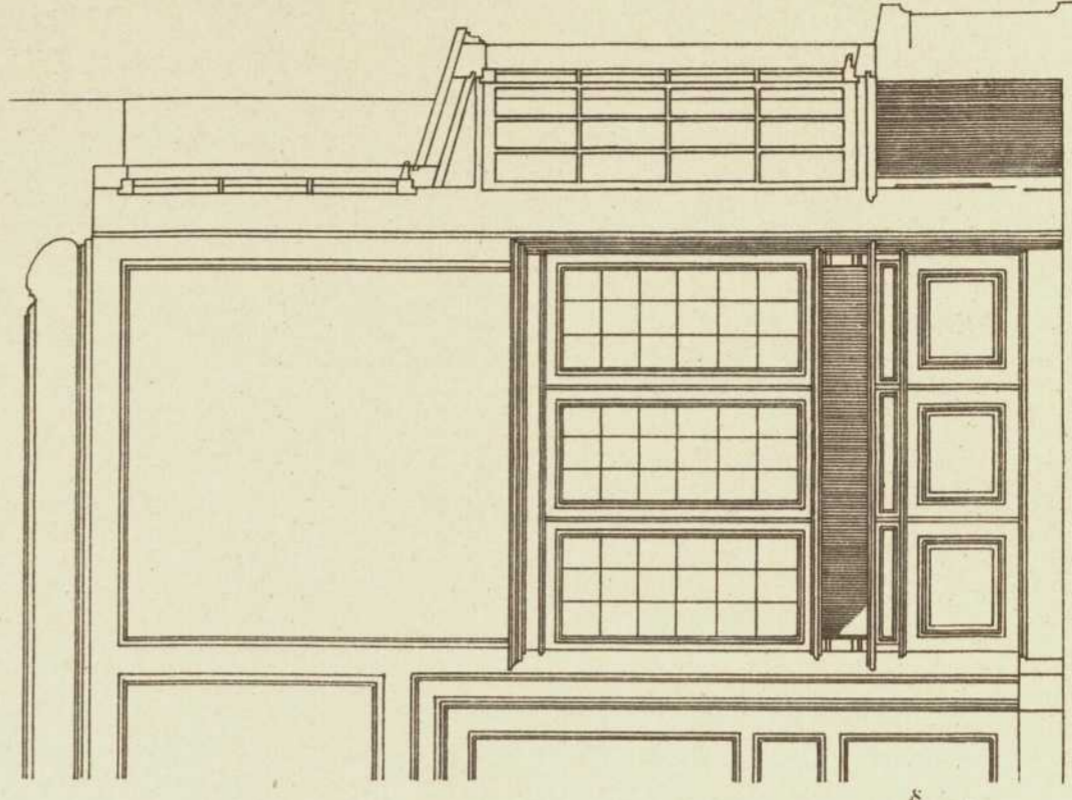
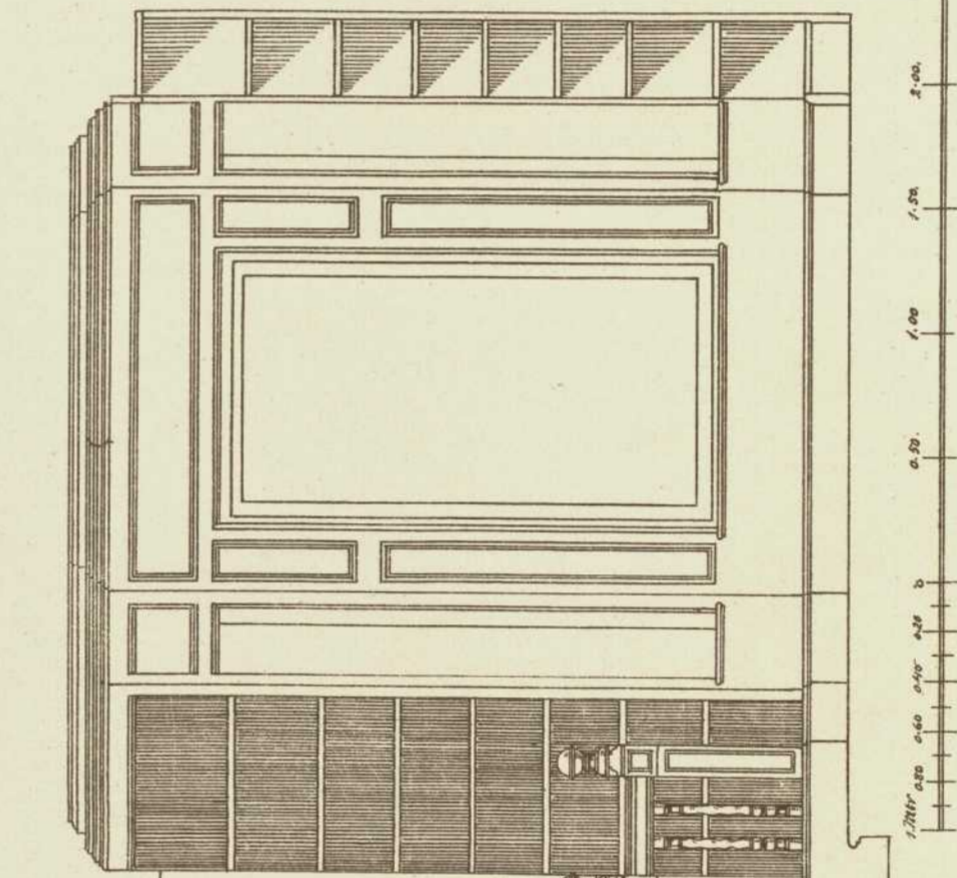
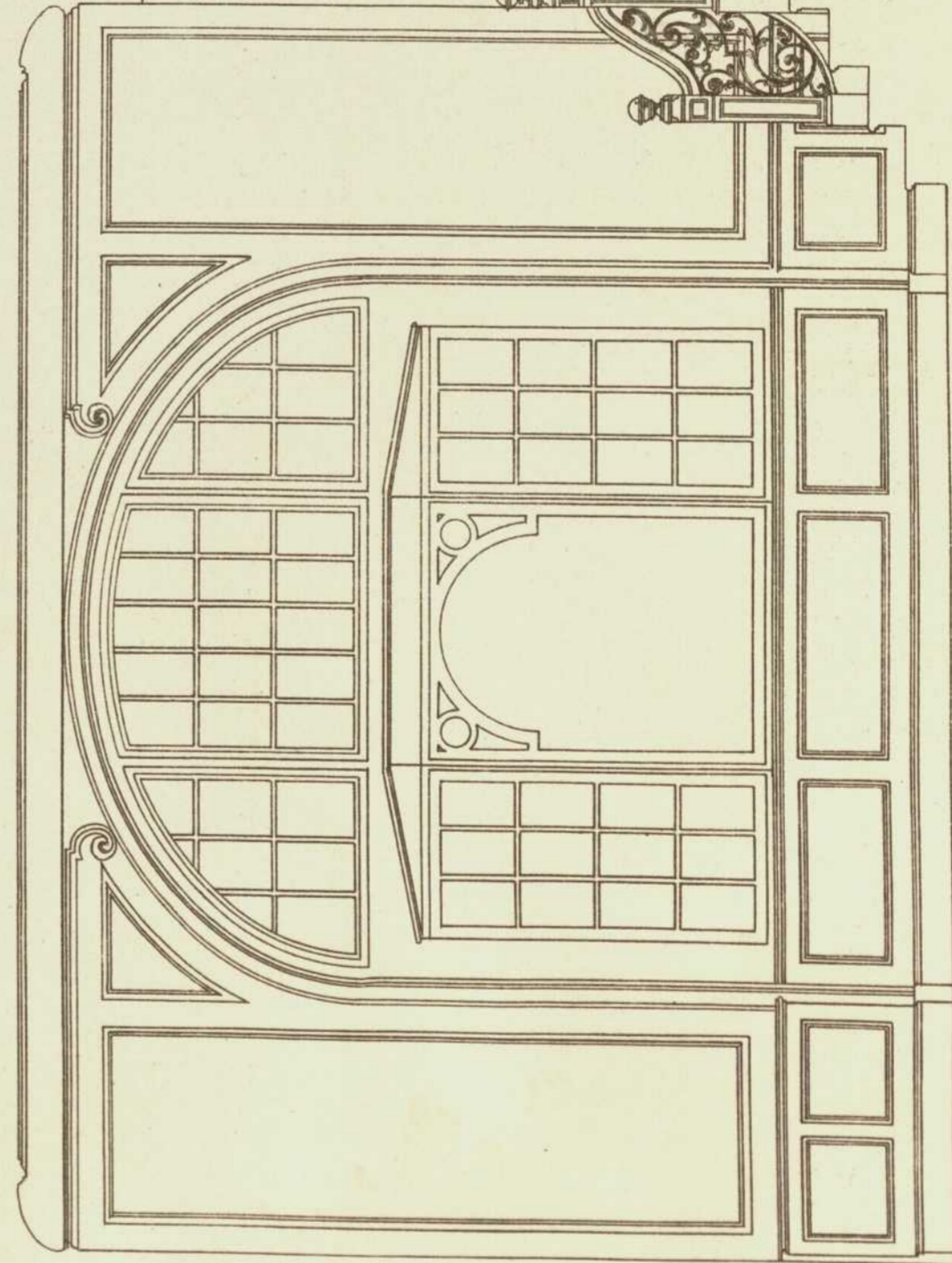
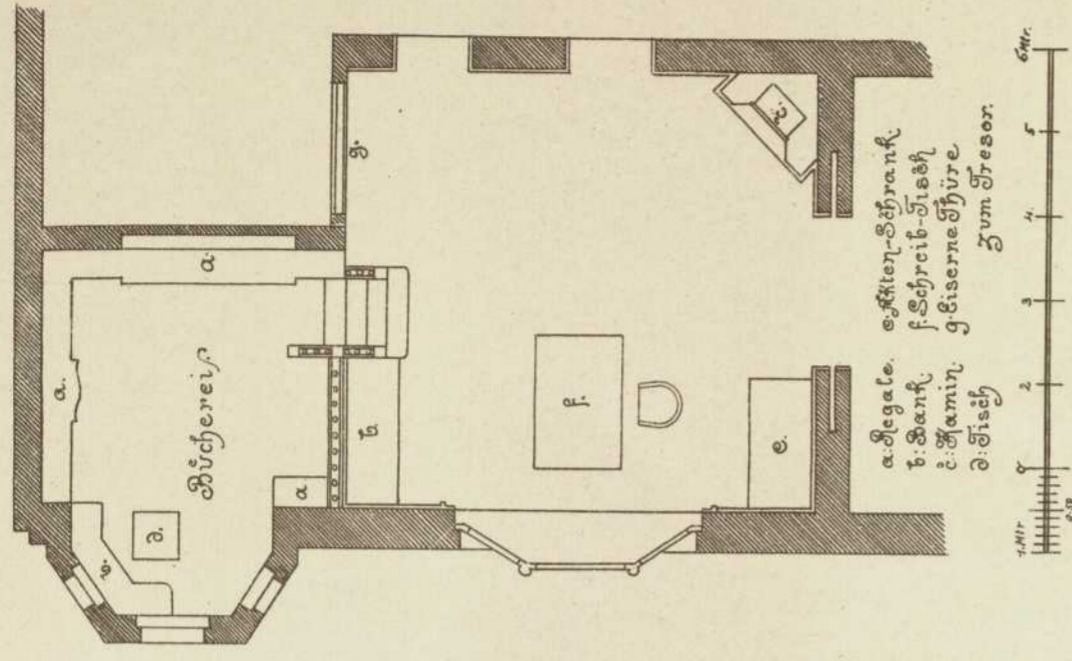


Arbeitszimmer im Hause des Herrn Reichsammanns Hofe
an der Canalstrasse in Bisselsdorf.



Perspektivische Ansicht.



Architekt: Otto March, Königsplatz
in Charlottenburg.

Verlag von Konrad Wittwer in Stuttgart.

Lith. Anst. v. A. Gattermicht.