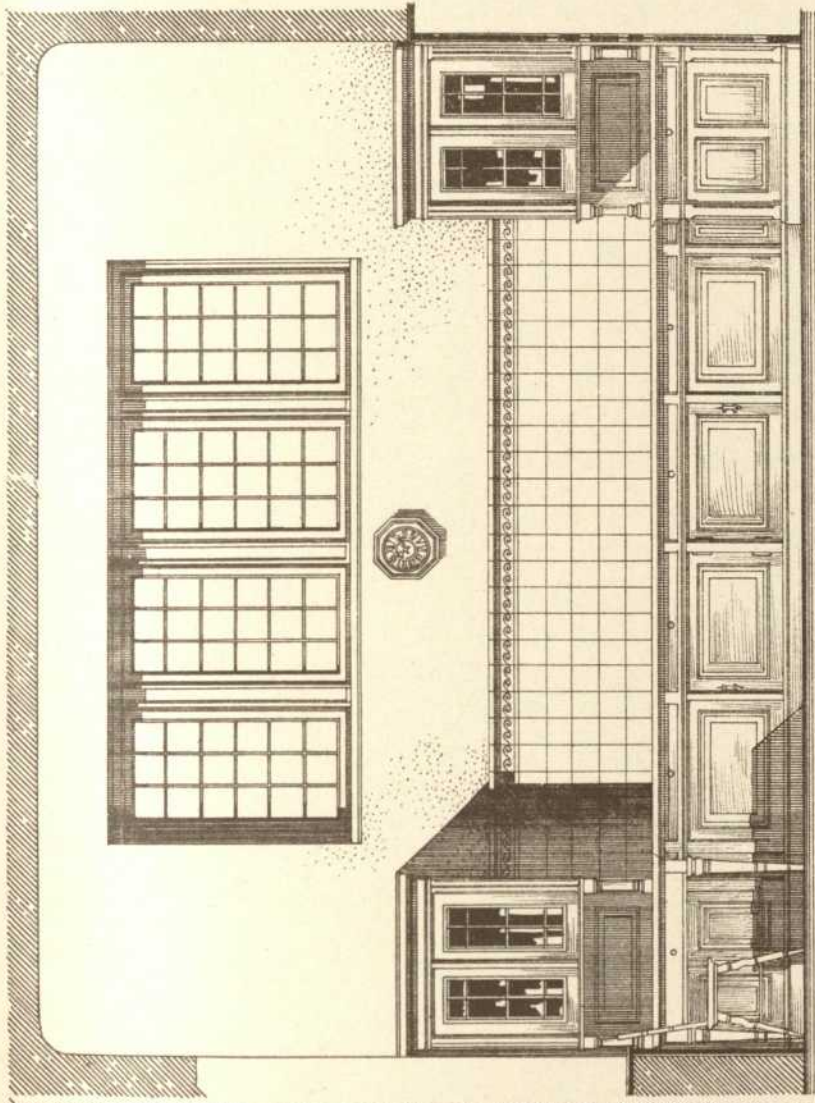
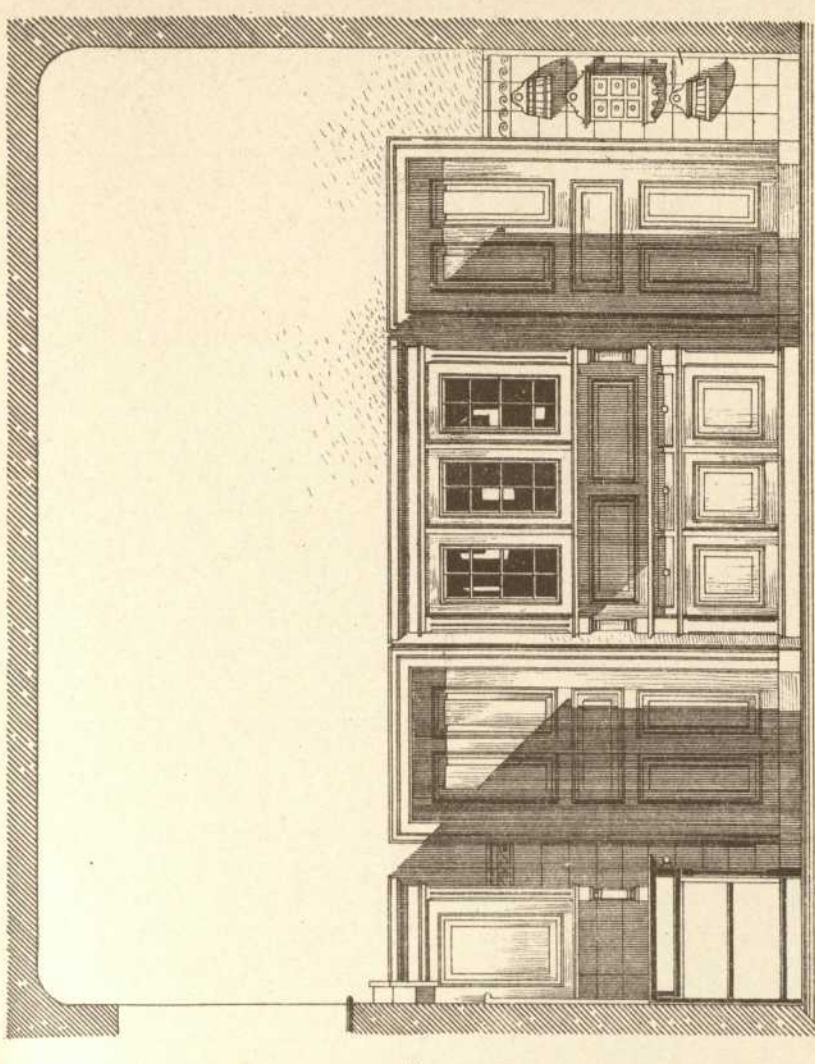


Wand-Ö. Schrank

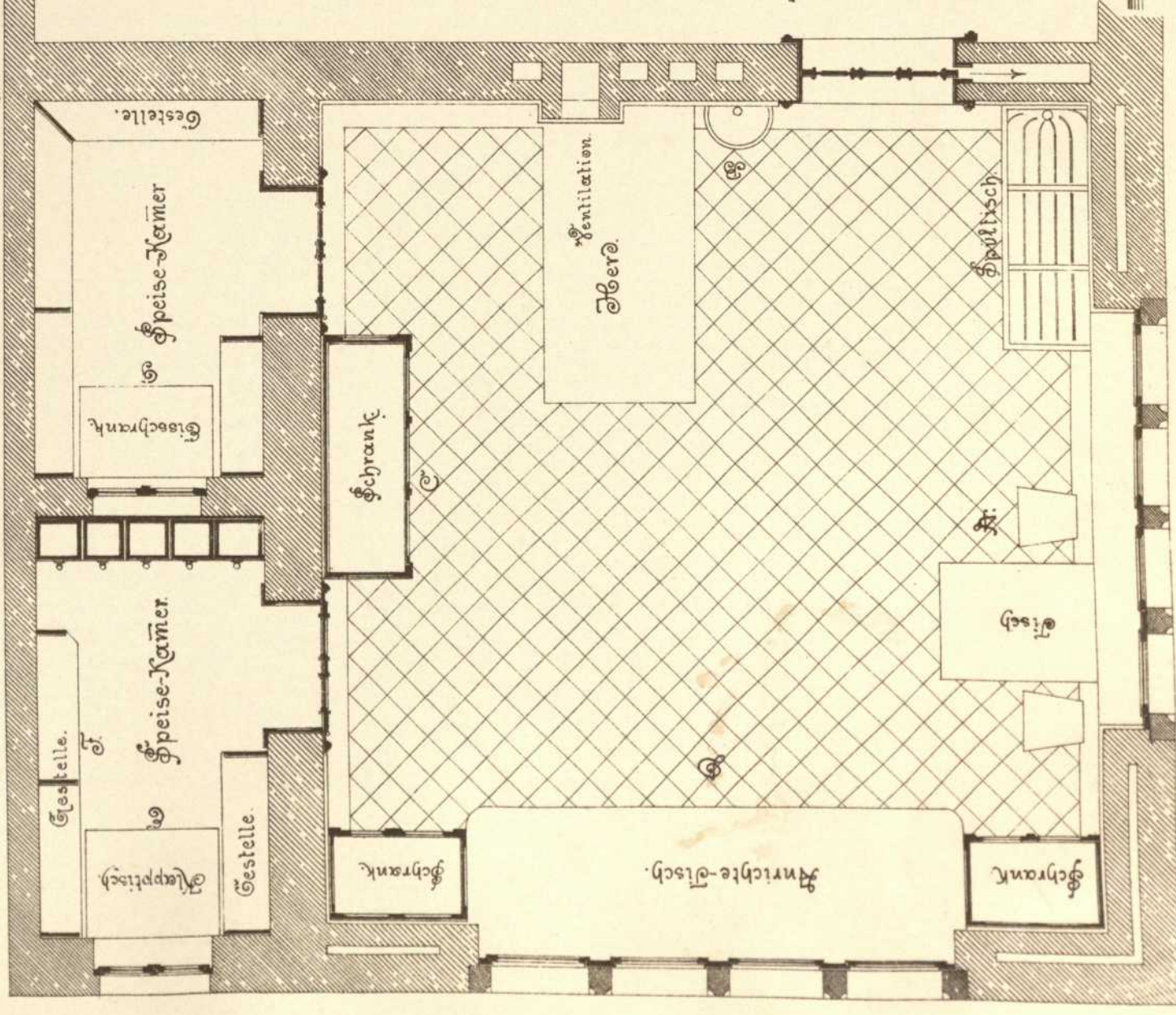


Anrichte-tisch. Schrank Wand-Ö.



Anrichte-tisch. Schrank Wand-Ö.

Mehlkasten
Gangschrank
Schrank



Wand-Ö. Schrank

Wand-Ö. Schrank

Wand-Ö. Schrank

Wand-Ö. Schrank

Wand-Ö. Schrank

Wand-Ö. Schrank

Wand-Ö. Schrank

Wand-Ö. Schrank

Wand-Ö. Schrank

Wand-Ö. Schrank

Wand-Ö. Schrank

Wand-Ö. Schrank

Wand-Ö. Schrank

Wand-Ö. Schrank

Wand-Ö. Schrank

Wand-Ö. Schrank

Wand-Ö. Schrank

Wand-Ö. Schrank

Wand-Ö. Schrank

Wand-Ö. Schrank

Wand-Ö. Schrank

Wand-Ö. Schrank

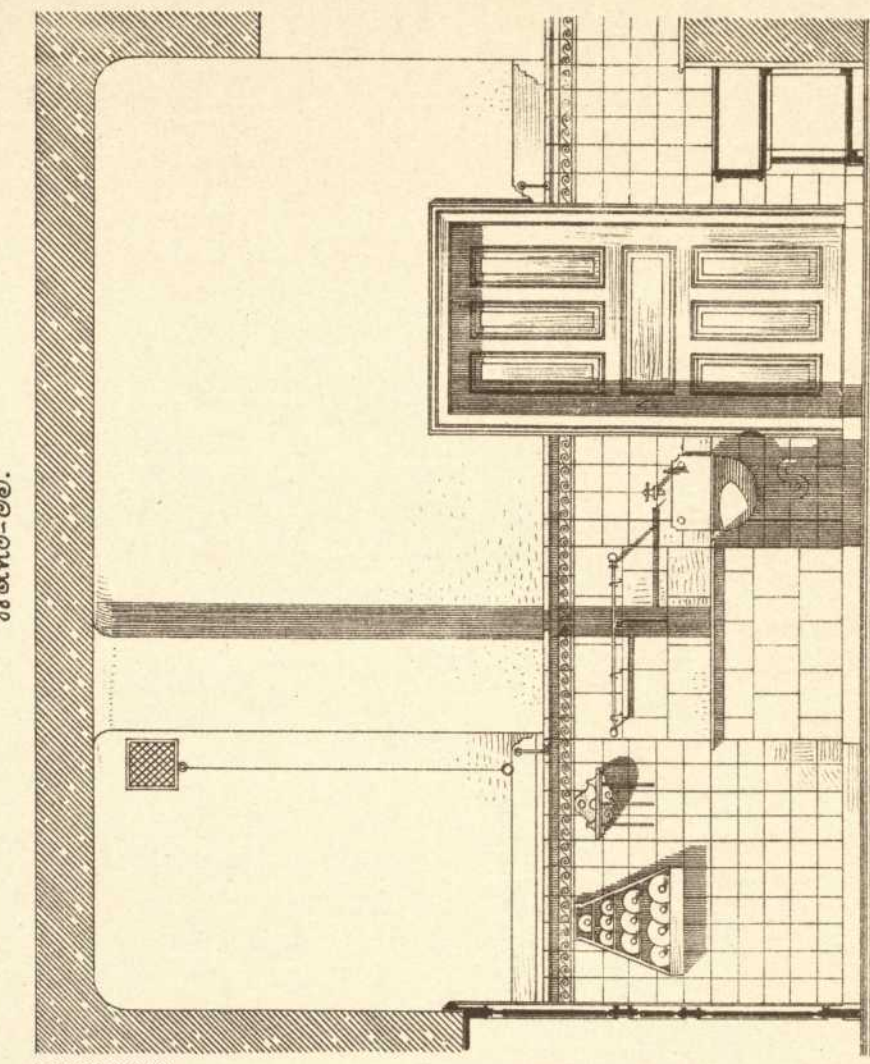
Wand-Ö. Schrank

Wand-Ö. Schrank

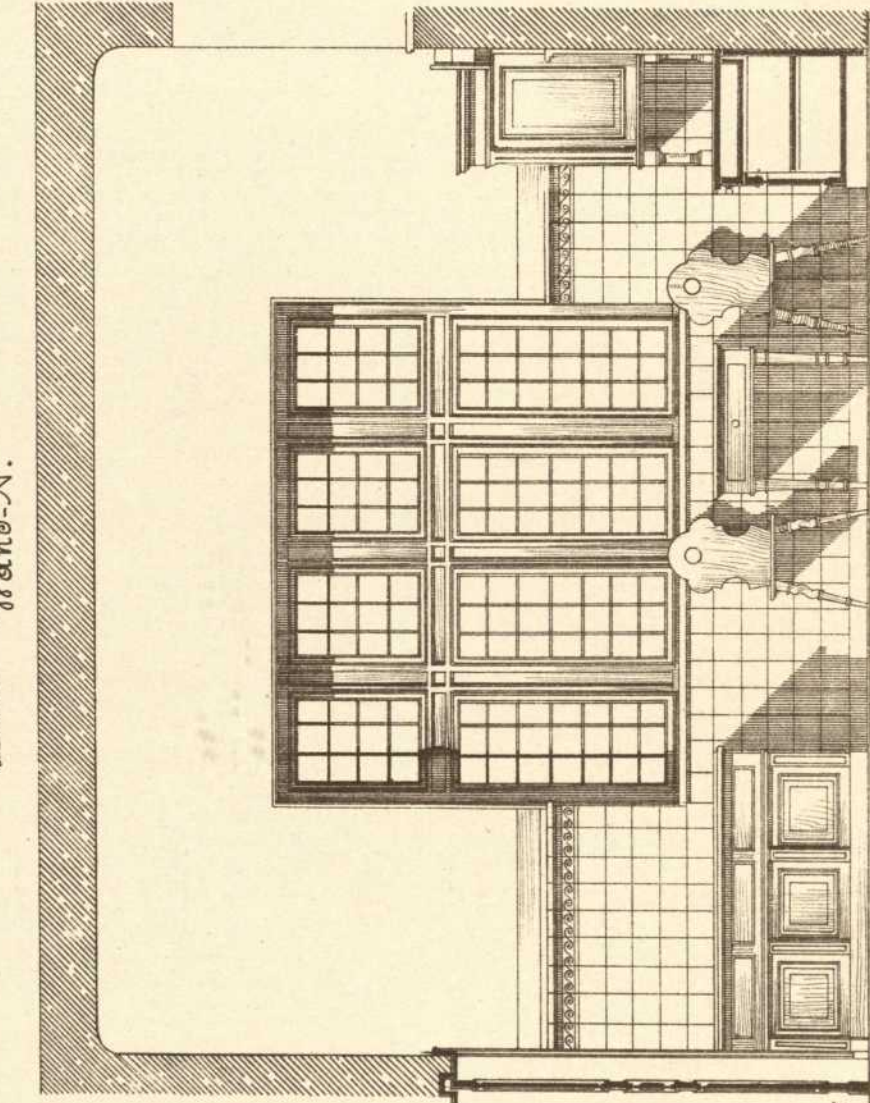
Wand-Ö. Schrank

im Landhaus v. J. 1851 in Wien-Maria Theresien-Str.
Architekt:
Otto Mersch. Proj. des Innern in Charlottenburg
Wand-Ö.

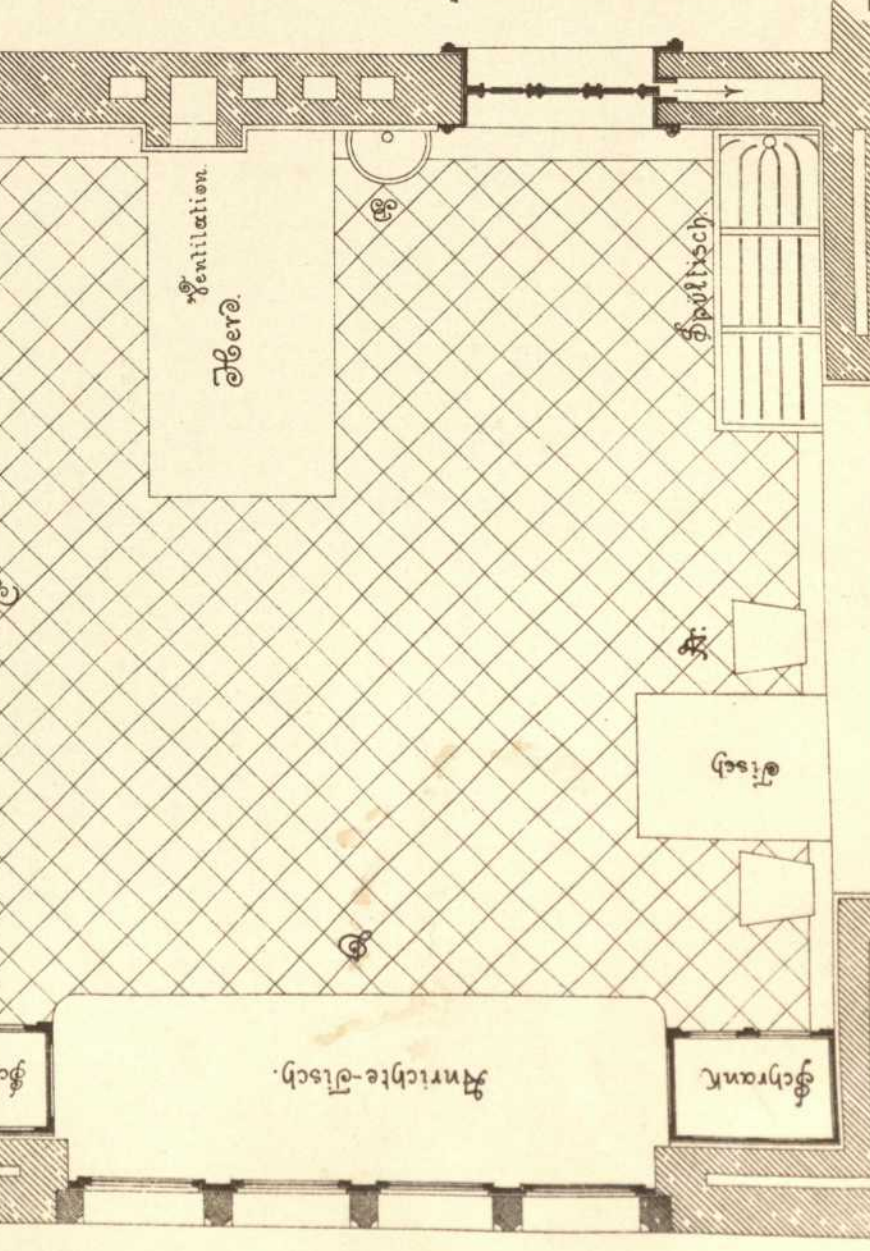
Wand-Ö.



Anrichte-tisch.



Schrank



Anrichte-tisch.

Schrank

Wand-Ö.

Verlag von Konrad Wittwer in Stuttgart.

Lith. Anst. v. A. Gattner.