

-
- Persistenter Identifier:** 1568626070802
- Titel:** Anleitung zur geographischen Ortsbestimmung : vorzüglich
vermittelt des Spiegelsextanten
- Autor:** Bohnenberger, Johann Gottlieb Friedrich von
- Ort:** Göttingen
- Maße:** VIII Seiten, 5 ungezählte Blätter, 514 Seiten, VII gefaltete Blätter : 7
Illustrationen
- Datierung:** 1798
- Signatur:** 1G 2912
- Strukturtyp:** monograph
- Lizenz:** <https://creativecommons.org/licenses/by-sa/4.0/>
- PURL:** <https://digibus.ub.uni-stuttgart.de/viewer/image/1568626070802/1/>
-
- Abschnitt:** Tafel VII
- Strukturtyp:** illustration
- Lizenz:** <https://creativecommons.org/licenses/by-sa/4.0/>
- PURL:** [https://digibus.ub.uni-stuttgart.de/viewer/image/1568626070802/549/
LOG_0043/](https://digibus.ub.uni-stuttgart.de/viewer/image/1568626070802/549/LOG_0043/)

Fig. 56.

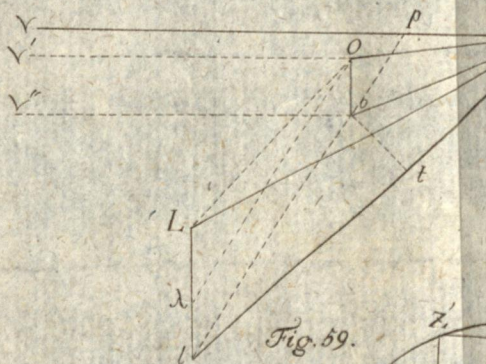


Fig. 58.

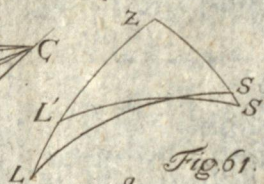


Fig. 61.



Fig. 59.

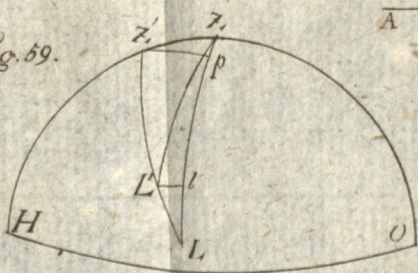


Fig. 60.

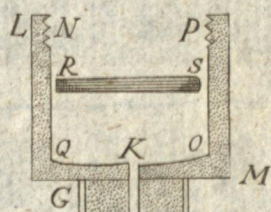
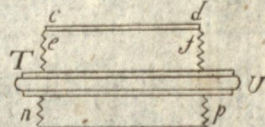
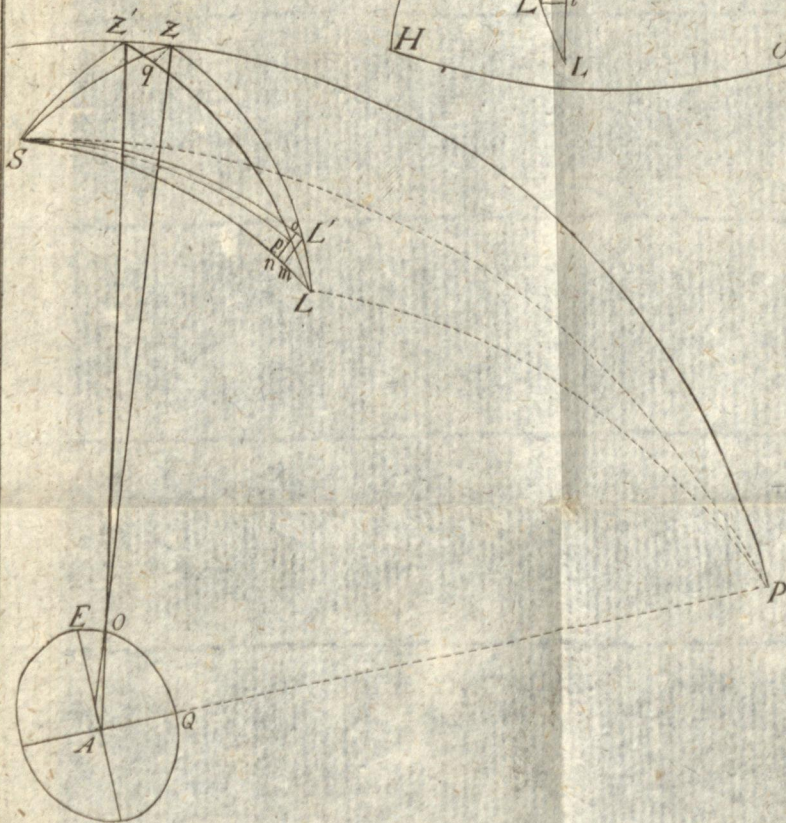


Fig. 62.

