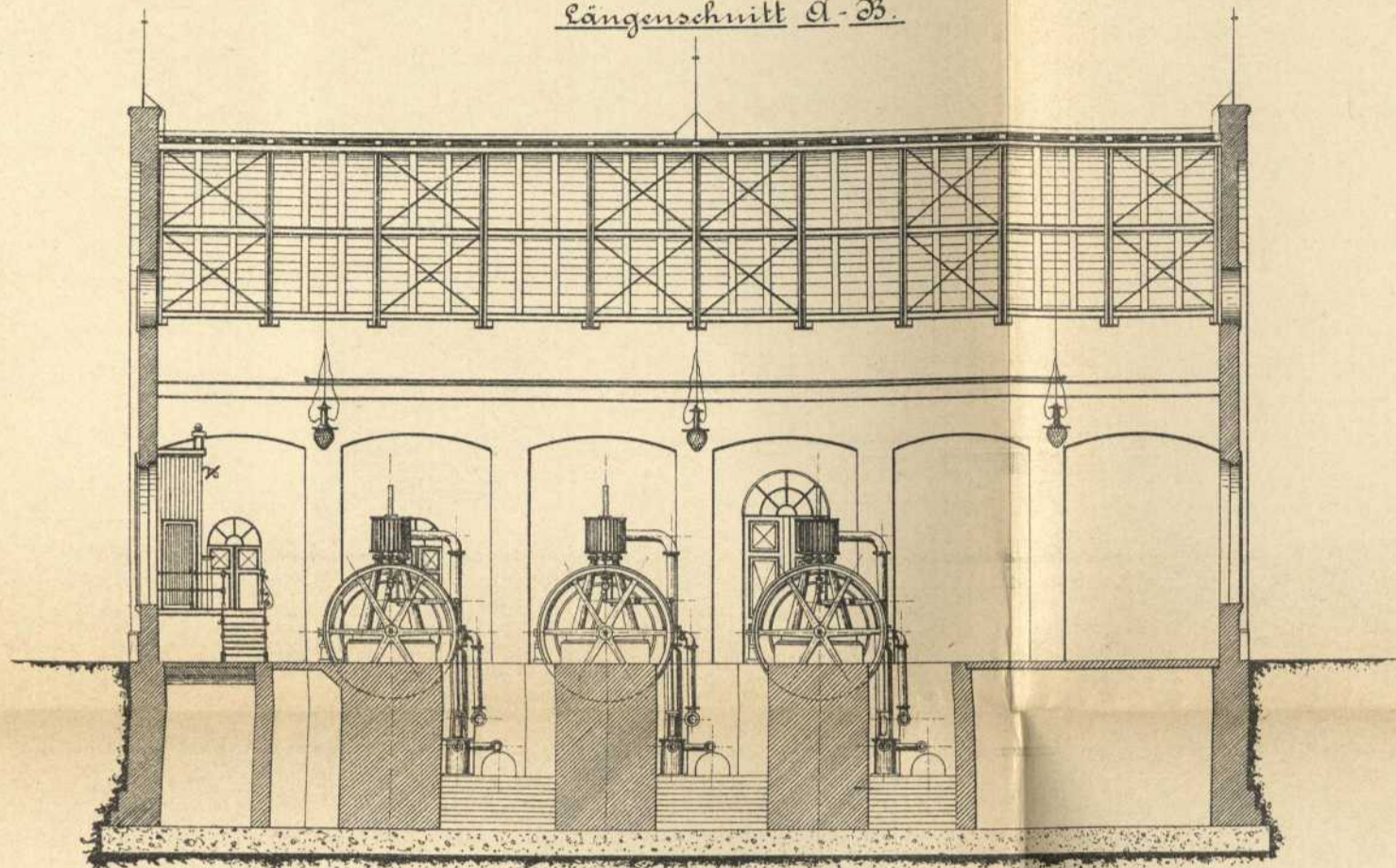


Projekt einer elektrischen Centrale für die Haupt- u. Residenzstadt Stuttgart.

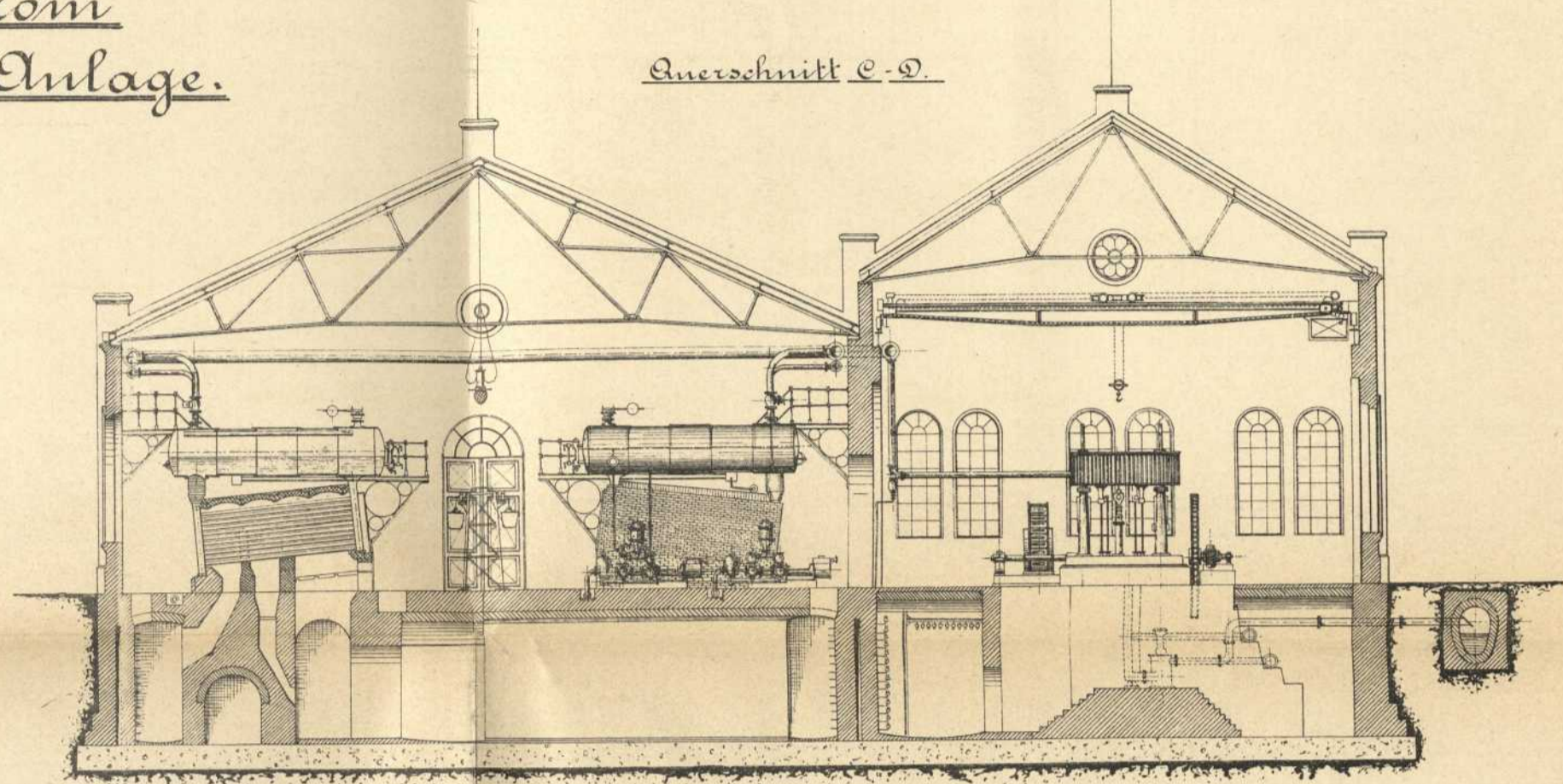
Tafel IV
(Plan 96° 10.)

Wechselstrom
Maschinen-Anlage.

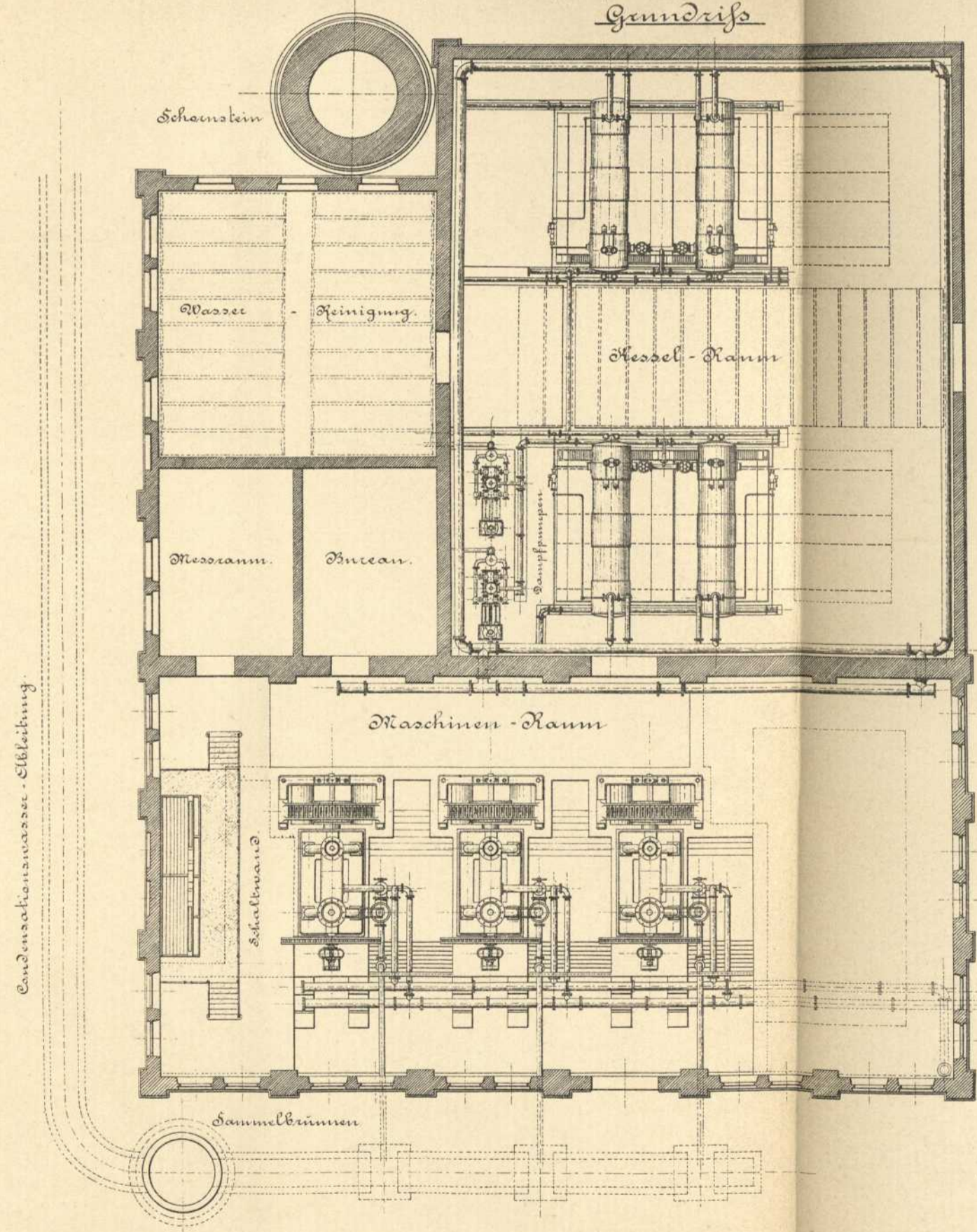
Längenschnitt A-B.



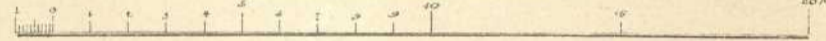
Querschnitt C-D.



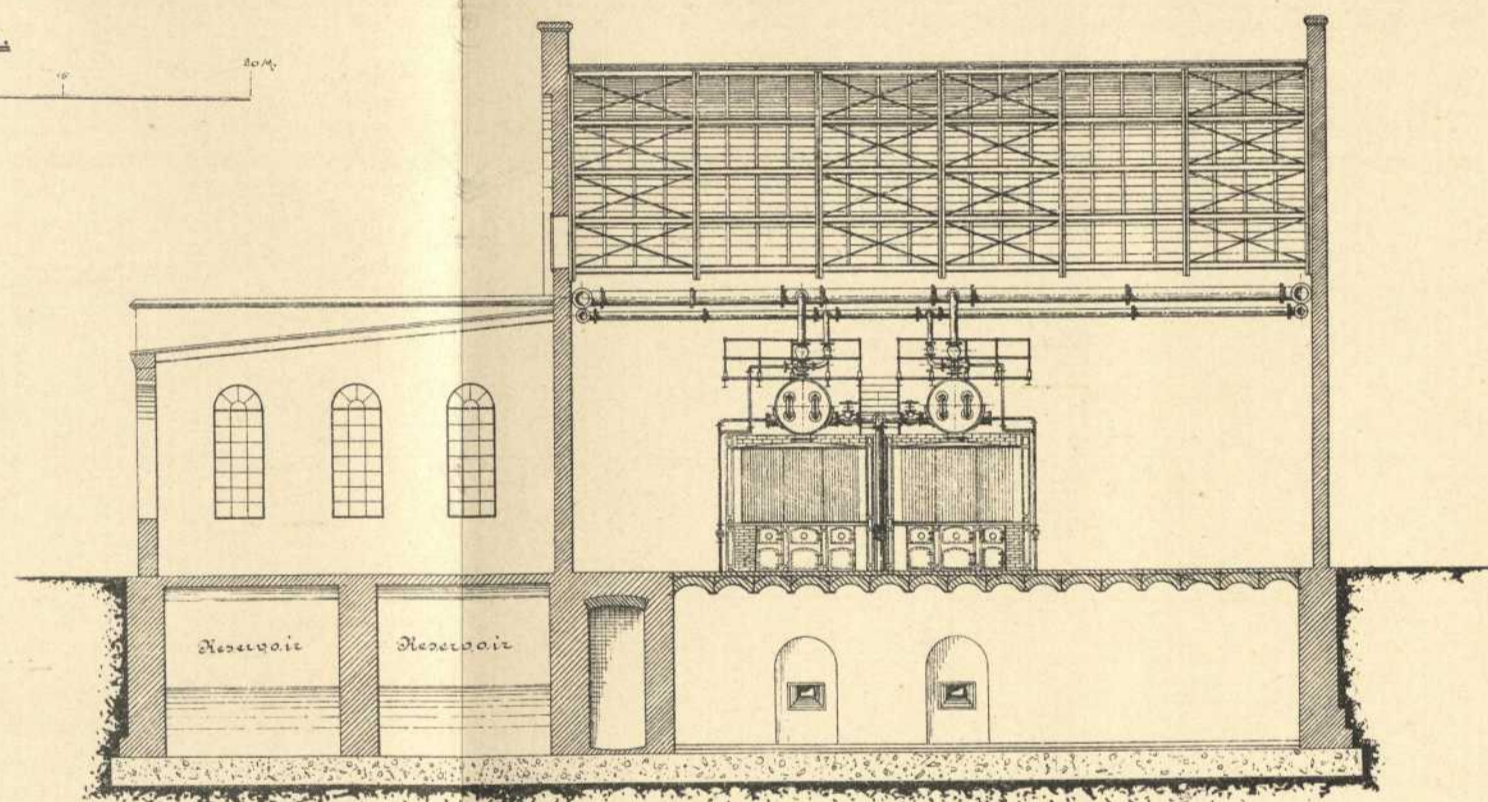
Grundriss



Maßstab 1:100.



Längenschnitt E-F.



Situation.

Maßstab 1:750.

