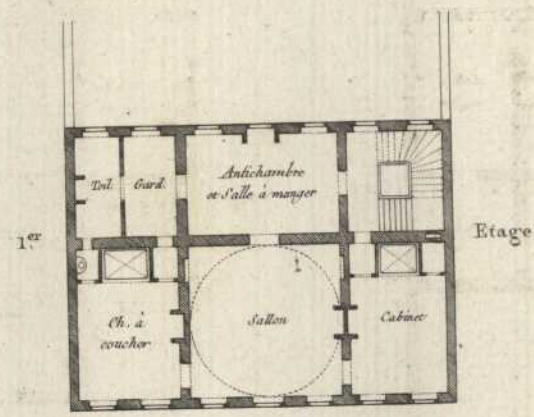


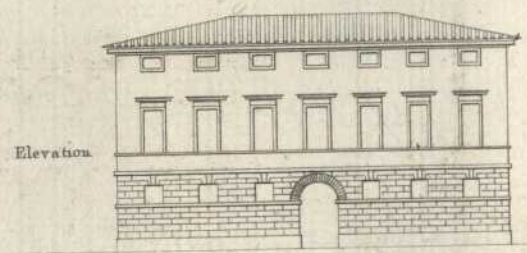
---

<b>Persistenter Identifier:</b>	1606749794825_2
<b>Titel:</b>	Précis des leçons d'architecture données à l'Ecole Polytechnique (second volume)
<b>Autor:</b>	Durand, Jean-Nicolas-Louis
<b>Ort:</b>	Paris
<b>Datierung:</b>	1805
<b>Strukturtyp:</b>	volume
<b>Lizenz:</b>	<a href="https://creativecommons.org/licenses/by-sa/4.0/">https://creativecommons.org/licenses/by-sa/4.0/</a>
<b>PURL:</b>	<a href="https://digibus.ub.uni-stuttgart.de/viewer/image/1606749794825_2/1/">https://digibus.ub.uni-stuttgart.de/viewer/image/1606749794825_2/1/</a>
<b>Abschnitt:</b>	Planches 22: Maisons particulières à la ville
<b>Strukturtyp:</b>	illustration
<b>Lizenz:</b>	<a href="https://creativecommons.org/licenses/by-sa/4.0/">https://creativecommons.org/licenses/by-sa/4.0/</a>
<b>PURL:</b>	<a href="https://digibus.ub.uni-stuttgart.de/viewer/image/1606749794825_2/160/LOG_0035/">https://digibus.ub.uni-stuttgart.de/viewer/image/1606749794825_2/160/LOG_0035/</a>

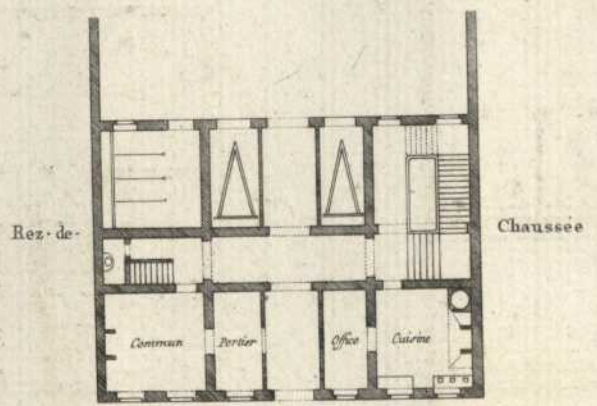




1<sup>er</sup> Etage

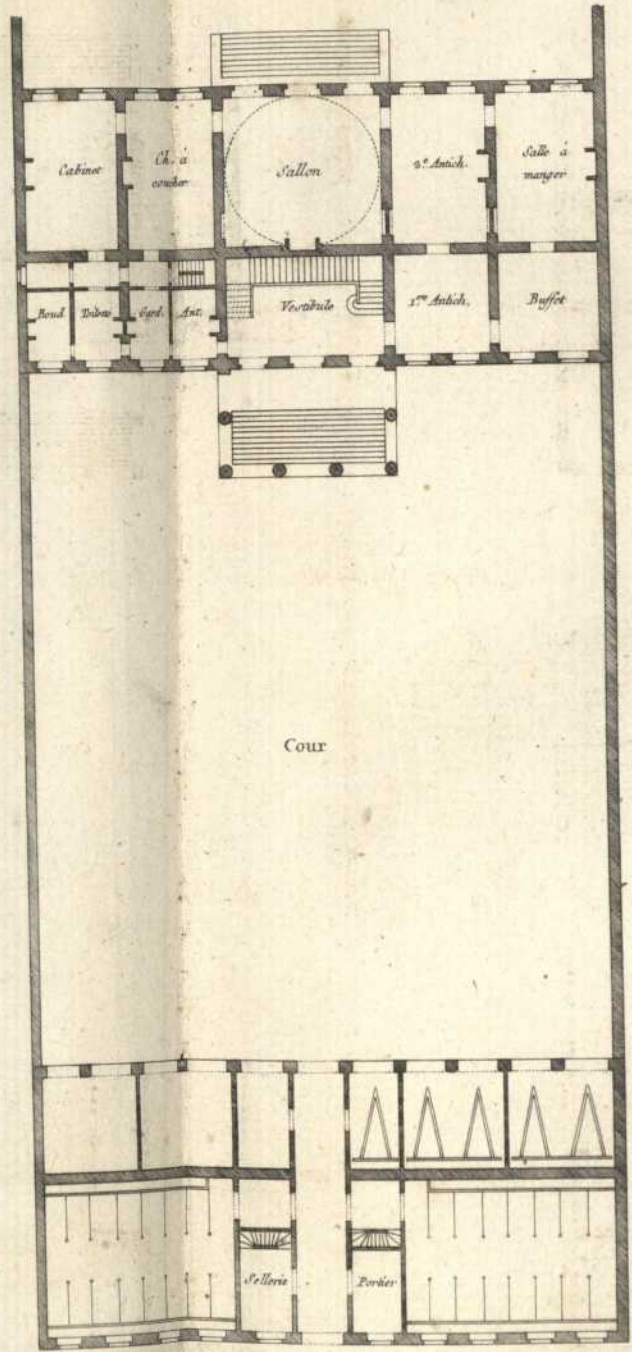


Elevation

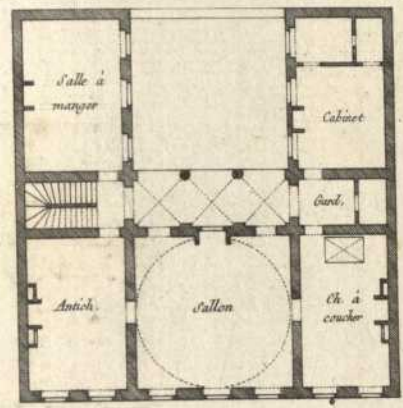


Rez-de-

Chaussée

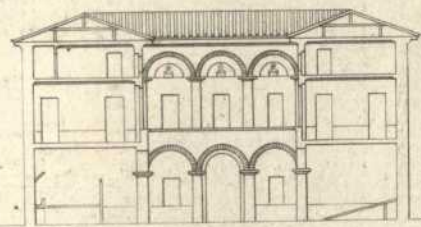


Cour

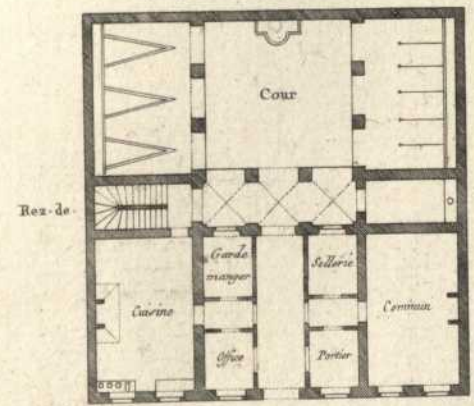


1<sup>er</sup>

Etage



Coupe



Rez-de-

Chaussée