

---

**Persistenter Identifier:** 1610643341259\_2

**Titel:** Tafelband

**Autor:** Schmölcke, Julius

**Ort:** Stuttgart

**Datierung:** 1883

**Strukturtyp:** volume

**Lizenz:** <https://creativecommons.org/licenses/by-sa/4.0/>

**PURL:** [https://digibus.ub.uni-stuttgart.de/viewer/image/1610643341259\\_2/1/](https://digibus.ub.uni-stuttgart.de/viewer/image/1610643341259_2/1/)

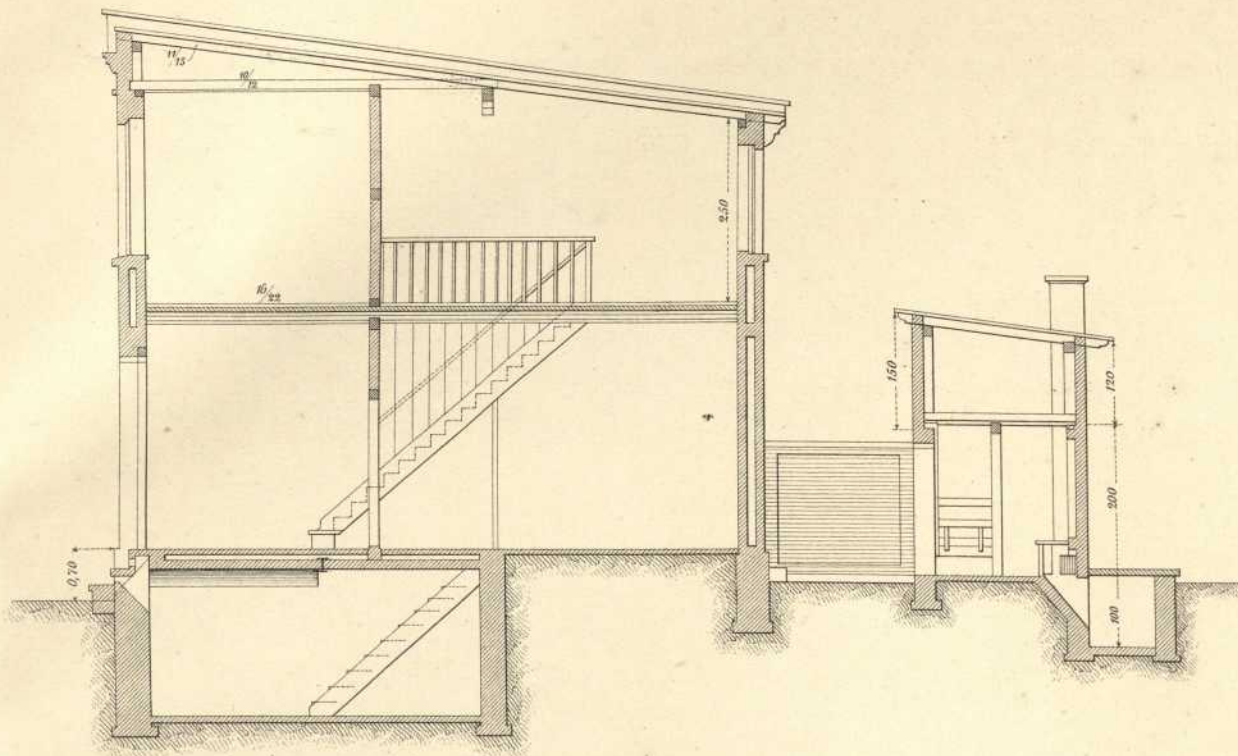
**Abschnitt:** Tafel VII: Beispiel eines Arbeiterwohnhauses, Ansicht, Schnitt, Grundriss

**Strukturtyp:** illustration

**Lizenz:** <https://creativecommons.org/licenses/by-sa/4.0/>

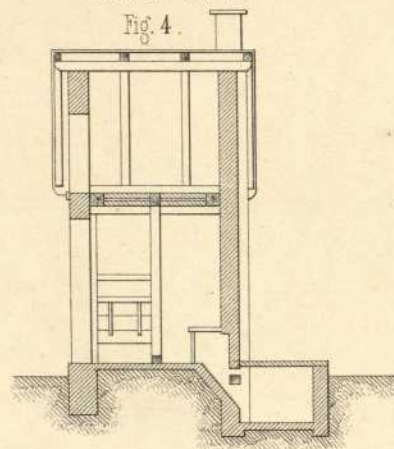
**PURL:** [https://digibus.ub.uni-stuttgart.de/viewer/image/1610643341259\\_2/11/LOG\\_0012/](https://digibus.ub.uni-stuttgart.de/viewer/image/1610643341259_2/11/LOG_0012/)

Schnitt C-D.



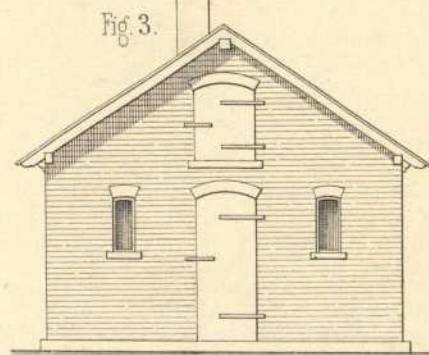
Schnitt C-D.

Fig. 4.



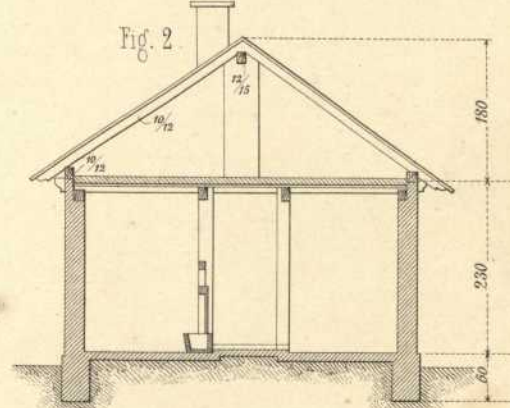
Ansicht.

Fig. 3.



Schnitt A-B.

Fig. 2.



Keller - Grundriss

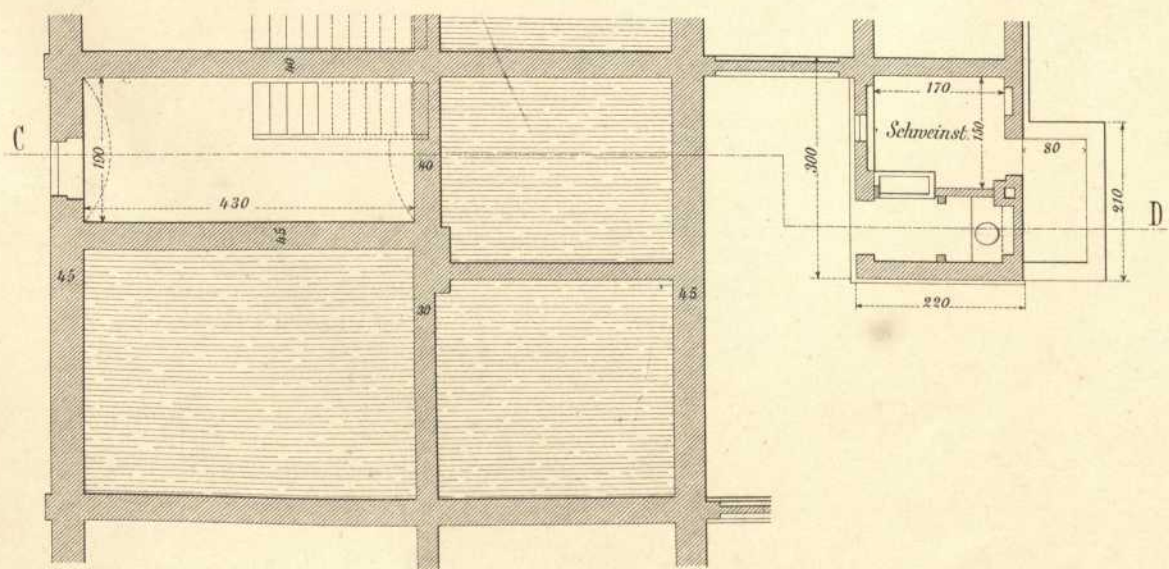
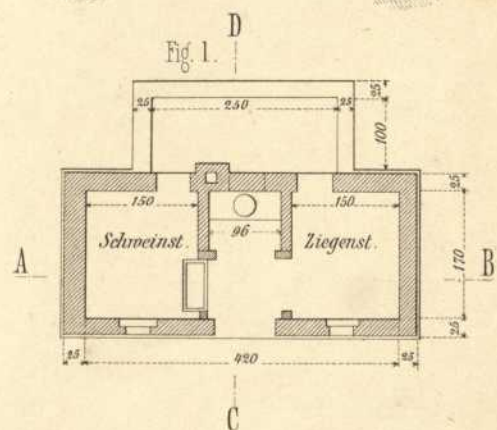


Fig. 1.



Maßstab 1:100.

