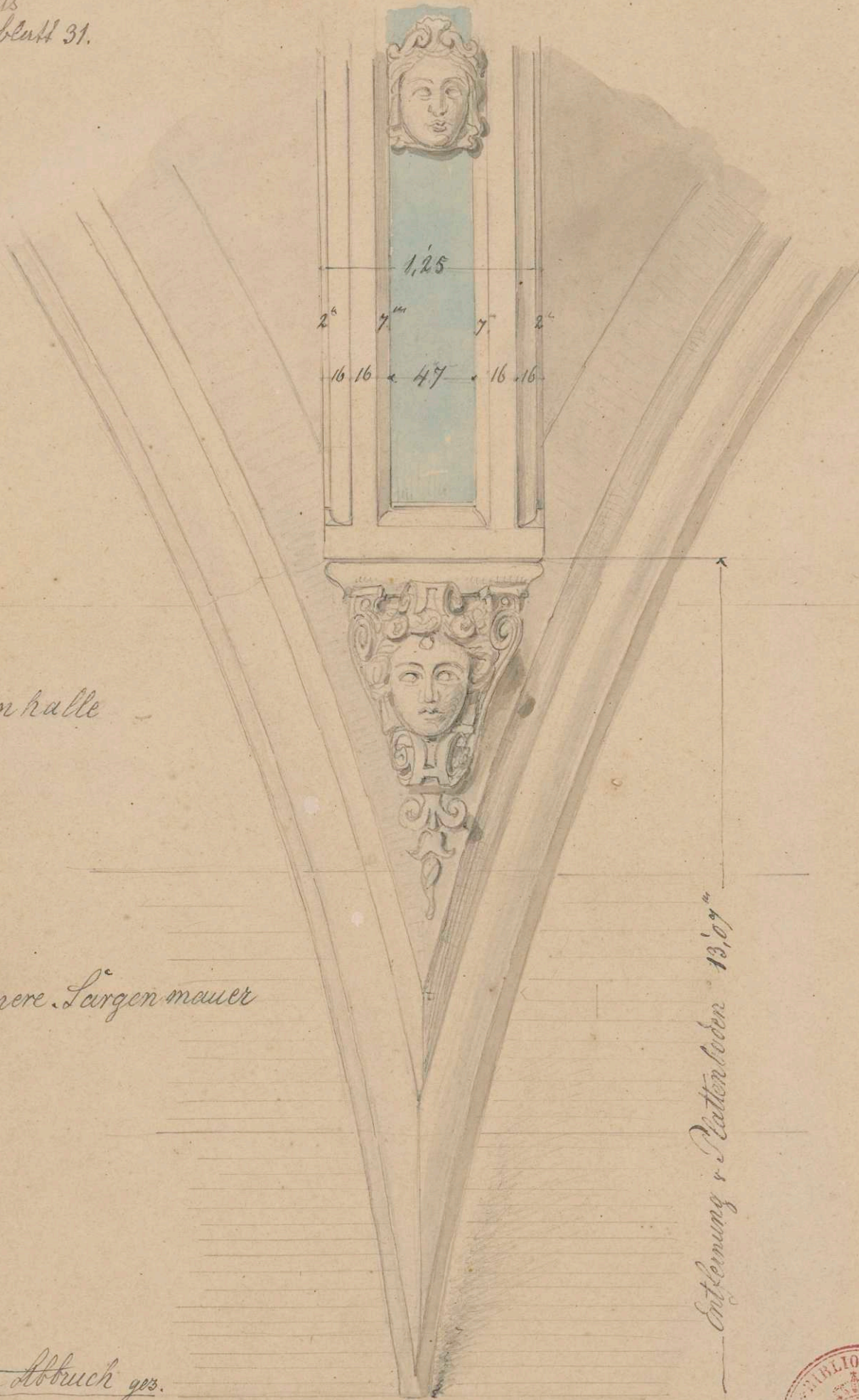


Lusthaus  
II H. Blatt 31.

Nr. 47



Brassin kalle

Innere Längenmauer

vor dem Abbruch ges.

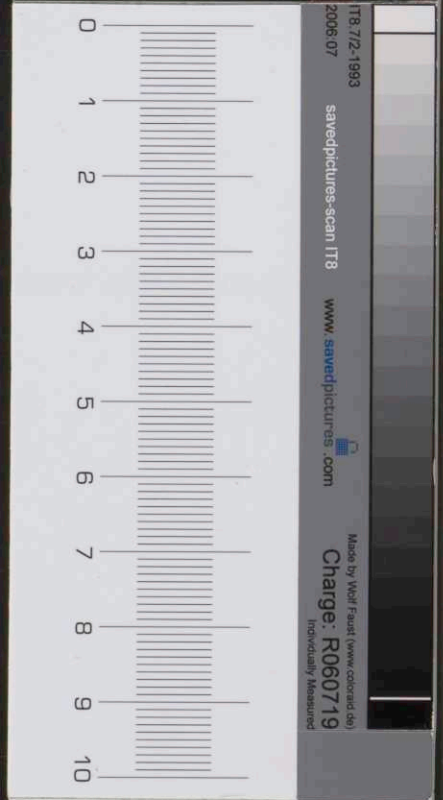
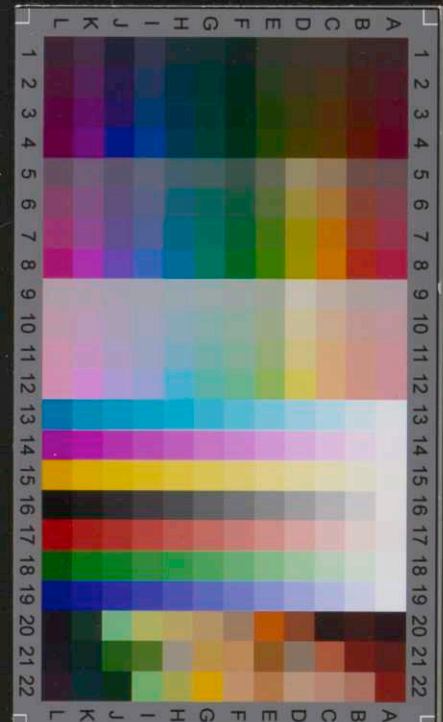
der mittlern Gangsäule entsprechend.

Entfernung v. Plattenboden 13,07<sup>m</sup>

gemauert



Beis 006.06a



IT8.7/2-1993  
2006 07  
www.savedpictures.com  
Made by Wolf Faust (www.colored.de)  
Charge: R060719  
Individually Measured