

III. St.

Postament
an den Säulen
der Basilica

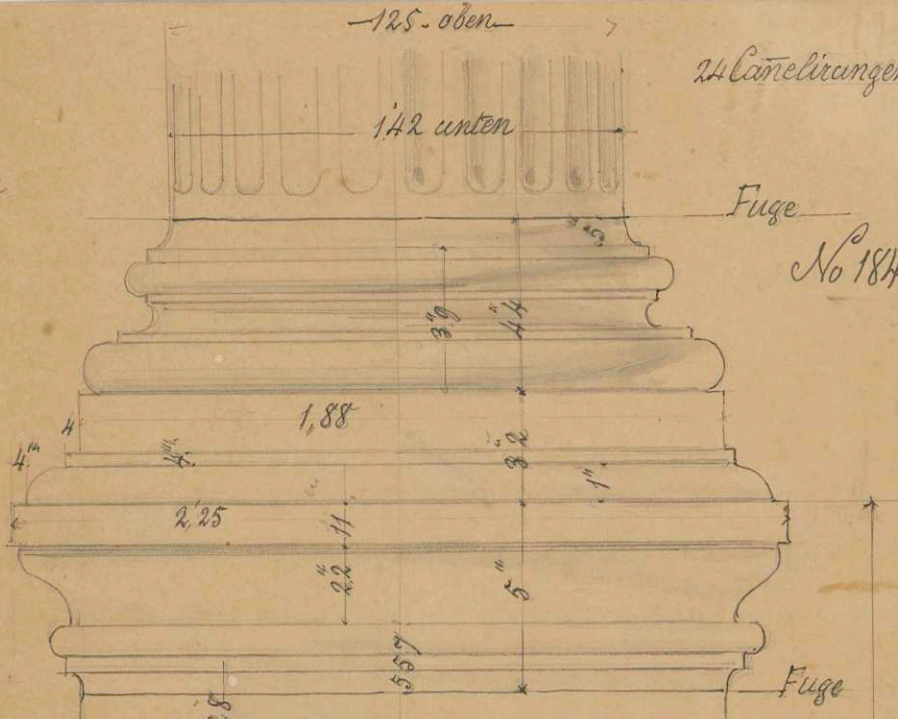
125. oben

24 Canalicungen

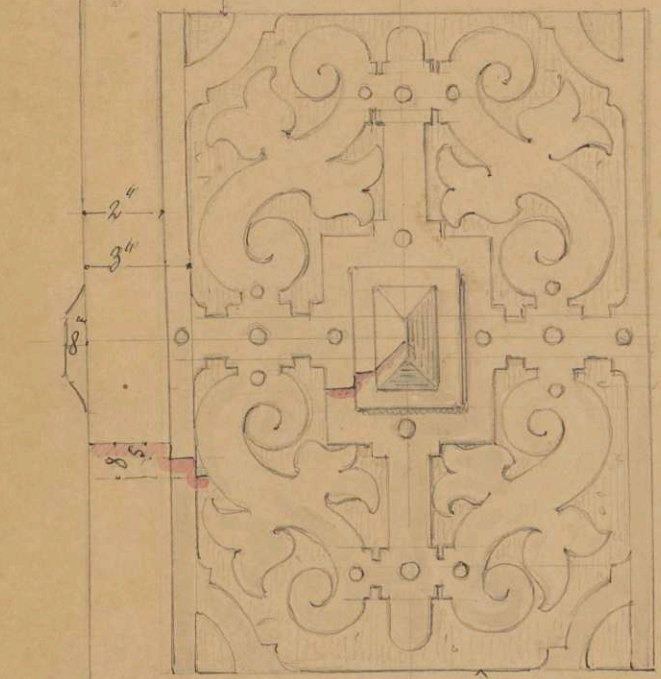
142 unten

Fuge

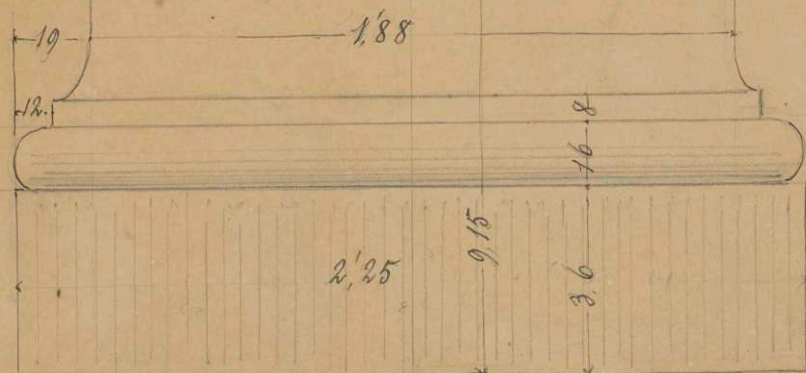
No 184



6. 125. 6"
unten



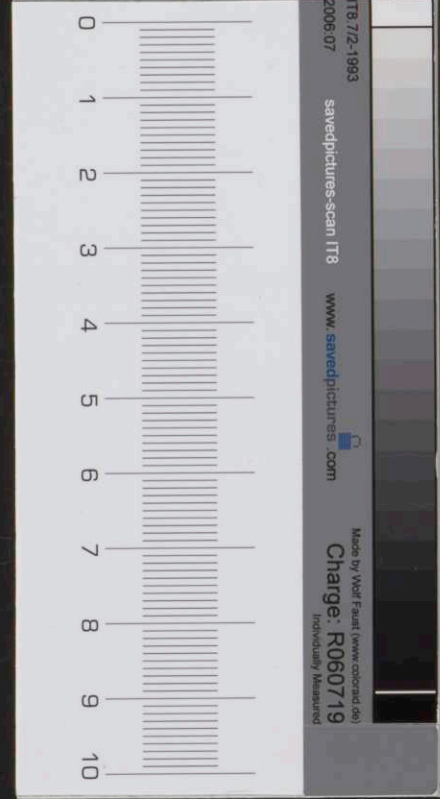
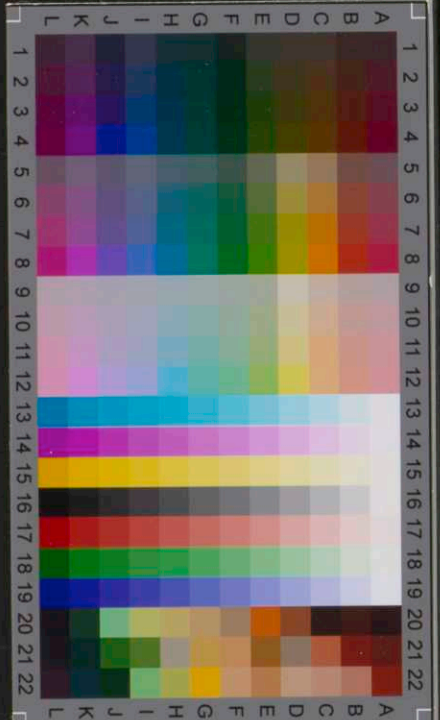
Basilica



Plattenboden

in Mai. 1845

Ba3008.15c



IT8.7/2-1993
2006.07
savepictures-scan IT8
www.savepictures.com
Made by Wolf Fraatz (www.cobord.de)
Charge: R060719
Individually Measured