

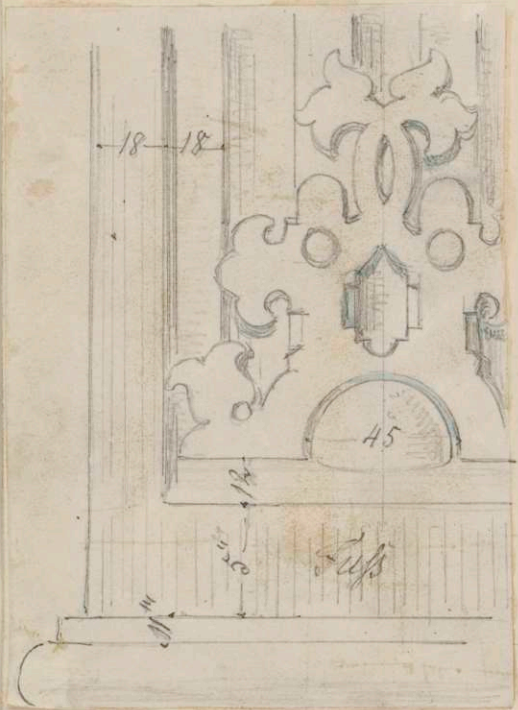
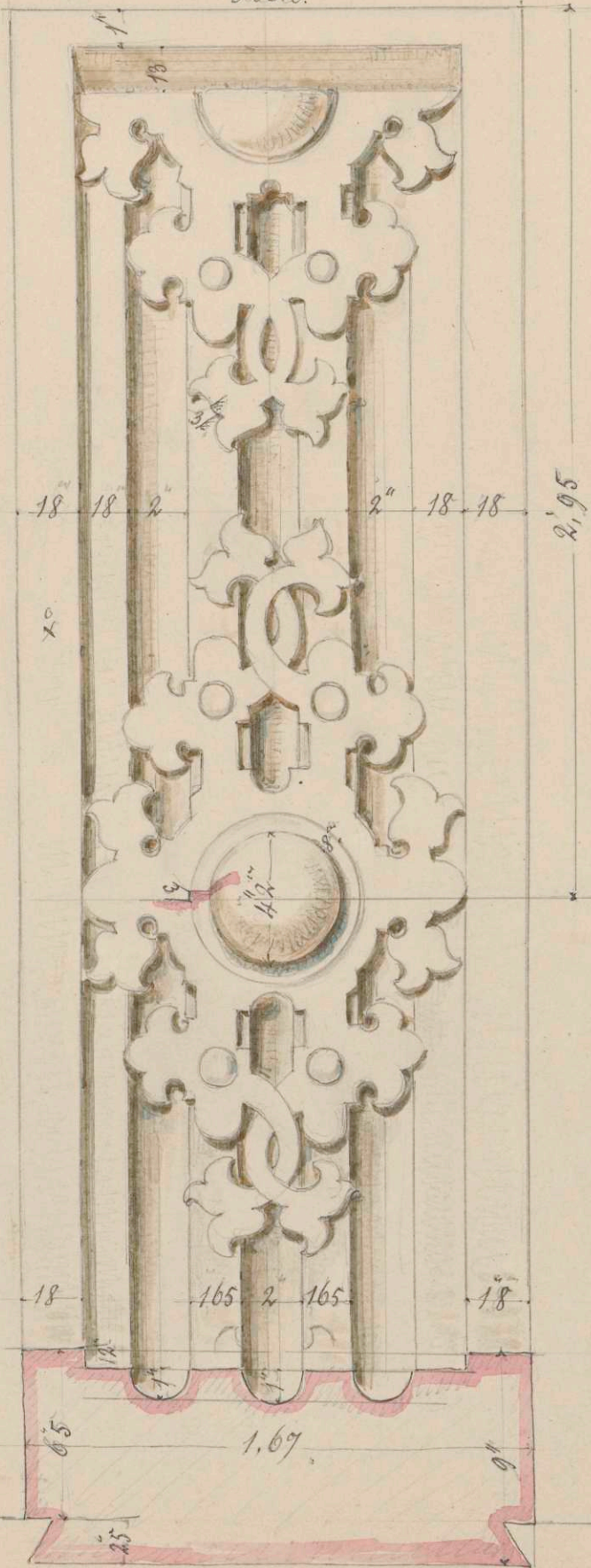
III^e Abthlg

Pl. 105

Pilaster-Verzierung

III^{te} Etage über dem Hauptgesims
am Giebel gegen den Schloßplatz.

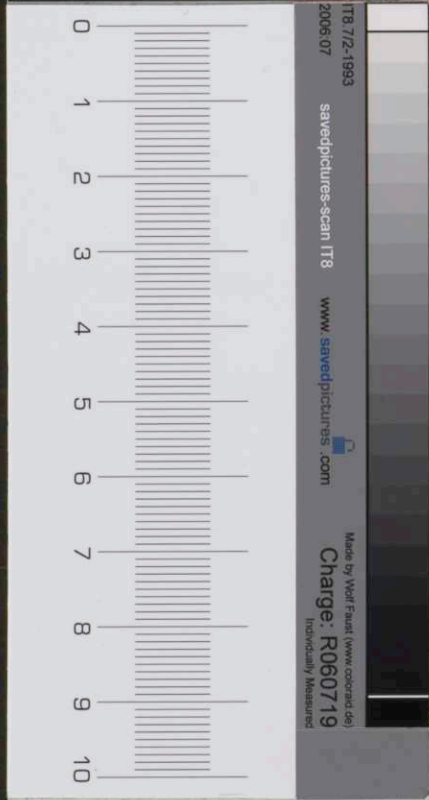
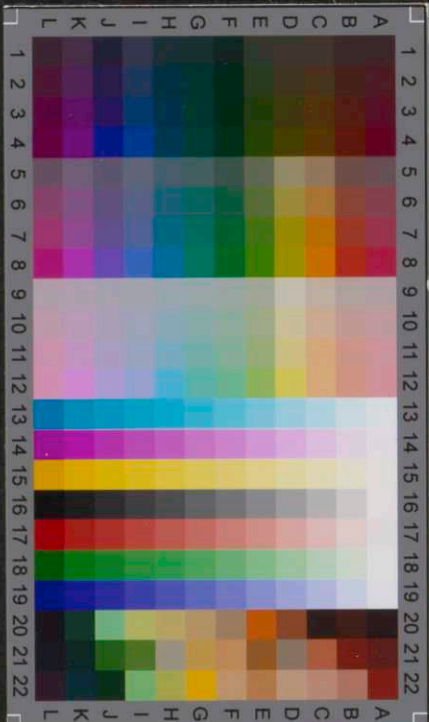
1.67
oben.



an Ort u Stelle
den 15 April 1845.



BCS 008.25a



IT8 72-1993
2006 07
www.savedpictures.com
Charge: R060719
Historically Measured