

**Persistenter Identifier:** 1466506725020\_1898\_1904  
**Titel:** Monatsschrift des Württembg. Vereins für Baukunde in Stuttgart  
**Ort:** Stuttgart  
**Maße:** getr. Zählung  
**Signatur:** 2Zb 8710-1898/1904  
**Strukturtyp:** volume

**Lizenz:** <https://creativecommons.org/licenses/by-sa/4.0/>

**PURL:** [https://digibus.ub.uni-stuttgart.de/viewer/image/1466506725020\\_1898\\_1904/1/](https://digibus.ub.uni-stuttgart.de/viewer/image/1466506725020_1898_1904/1/)

**Abschnitt:** Bergbahnen in der Schweiz. Gleise. Schnitte

**Strukturtyp:** illustration

**Lizenz:** <https://creativecommons.org/licenses/by-sa/4.0/>

**PURL:** [https://digibus.ub.uni-stuttgart.de/viewer/image/1466506725020\\_1898\\_1904/51/LOG\\_0030/](https://digibus.ub.uni-stuttgart.de/viewer/image/1466506725020_1898_1904/51/LOG_0030/)

Zum Vortrag: Bergbahnen in der Schweiz (2./4. 1898)

Fig. 1. Rigi (1871-75), etc.  
(Syst. Rigggenbach).

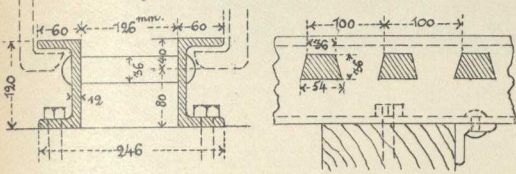


Fig. 2. Brienzer Rothorn (1893) etc.  
(Syst. Abb).

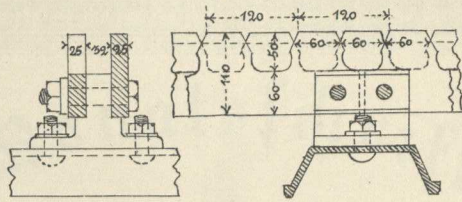


Fig. 3. Bürgenstock (1888).  
(Syst. Abb).

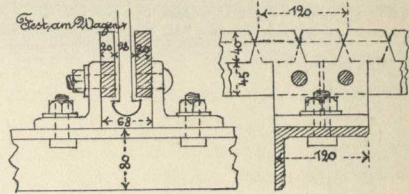


Fig. 4. Jungfrau (Syst. Strub, 1897).

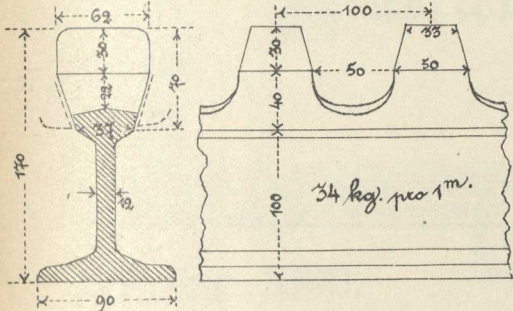


Fig. 5. Pilatus (1889). Syst. Locher.

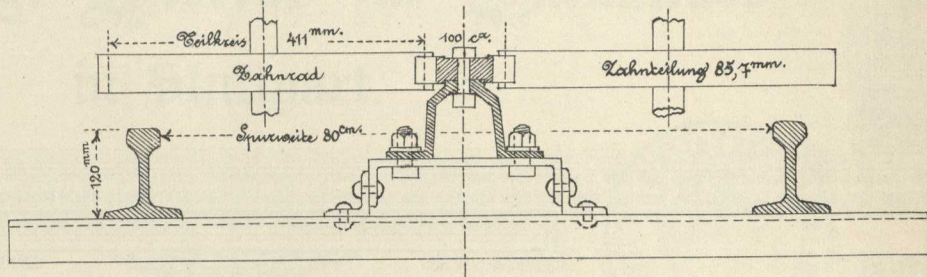


Fig. 6. Ausweiche der zweischinigen Seilbahnen.

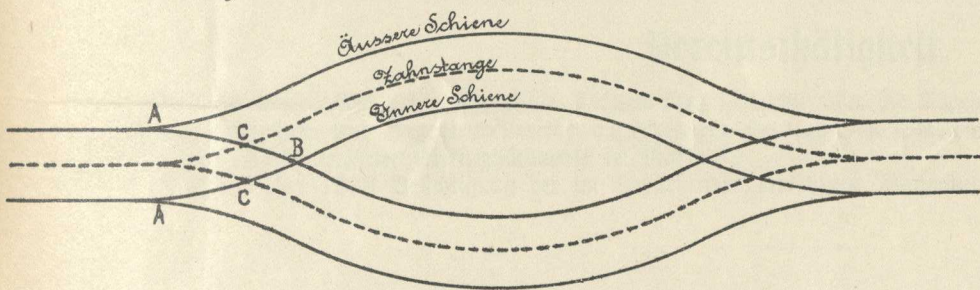


Fig. 9. Seil-Umleitung.

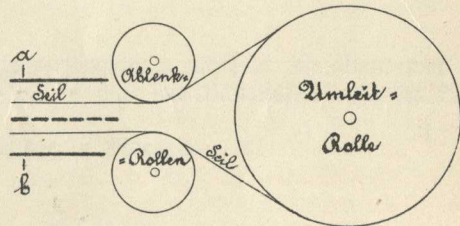


Fig. 7. Ausweiche der dreischinigen Seilbahnen.

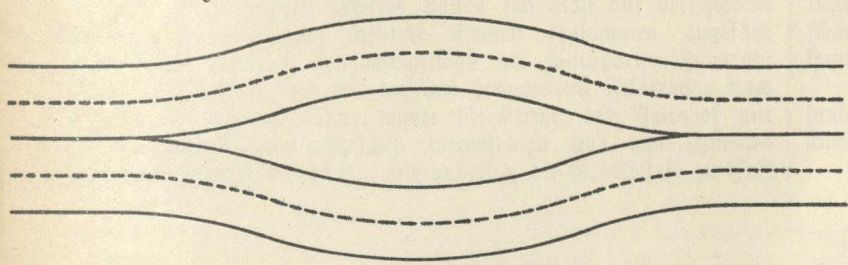


Fig. 8.

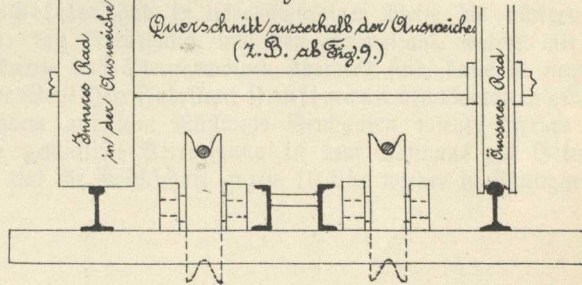


Fig. 11. Stanserhorn (1893).  
(Syst. Bucher).

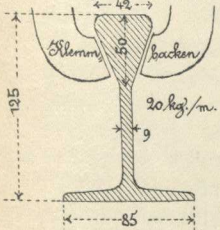
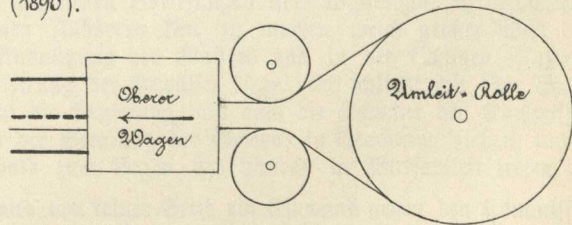
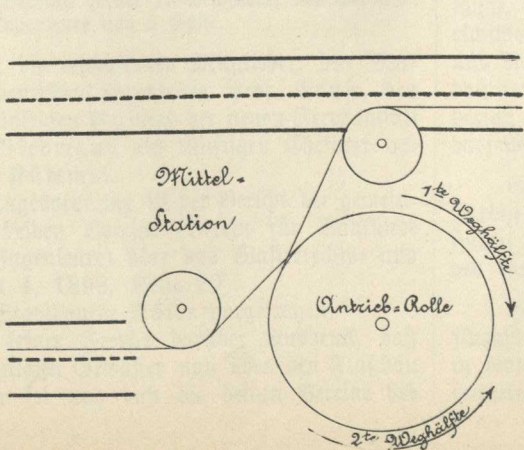


Fig. 10. Monte San Salvatore (1890).



Maassstäbe:

1:10 zu Fig. 1, 2, 3 und 5.

1:5 zu Fig. 4 und 11.

Unbestimmt zu Fig. 6 bis 10.

