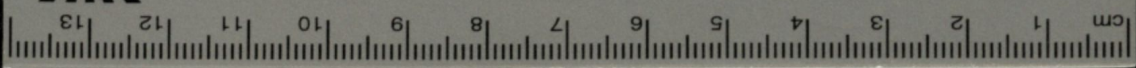
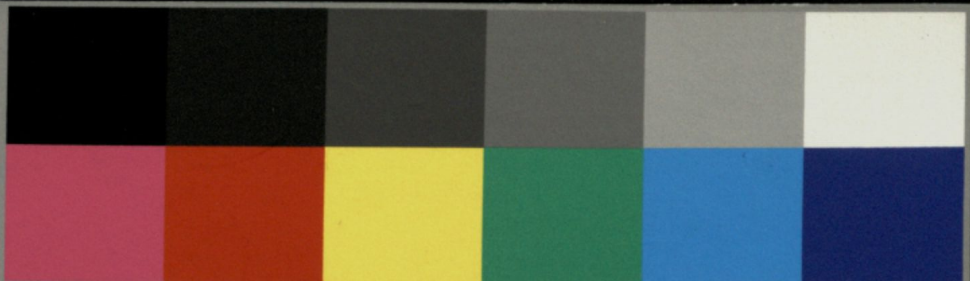


Persistenter Identifier: 1496387128257
Titel: Prozessionsfahne
Künstler/Illustrator: Linck (?), Wilhelm
Ort: Stuttgart
Inhalt/Darstellung: Skizze
Datierung: Mitte 19. Jahrhundert
Besitzende Institution: Universitätsbibliothek Stuttgart
Signatur: Linc0157
Strukturtyp: Drawing

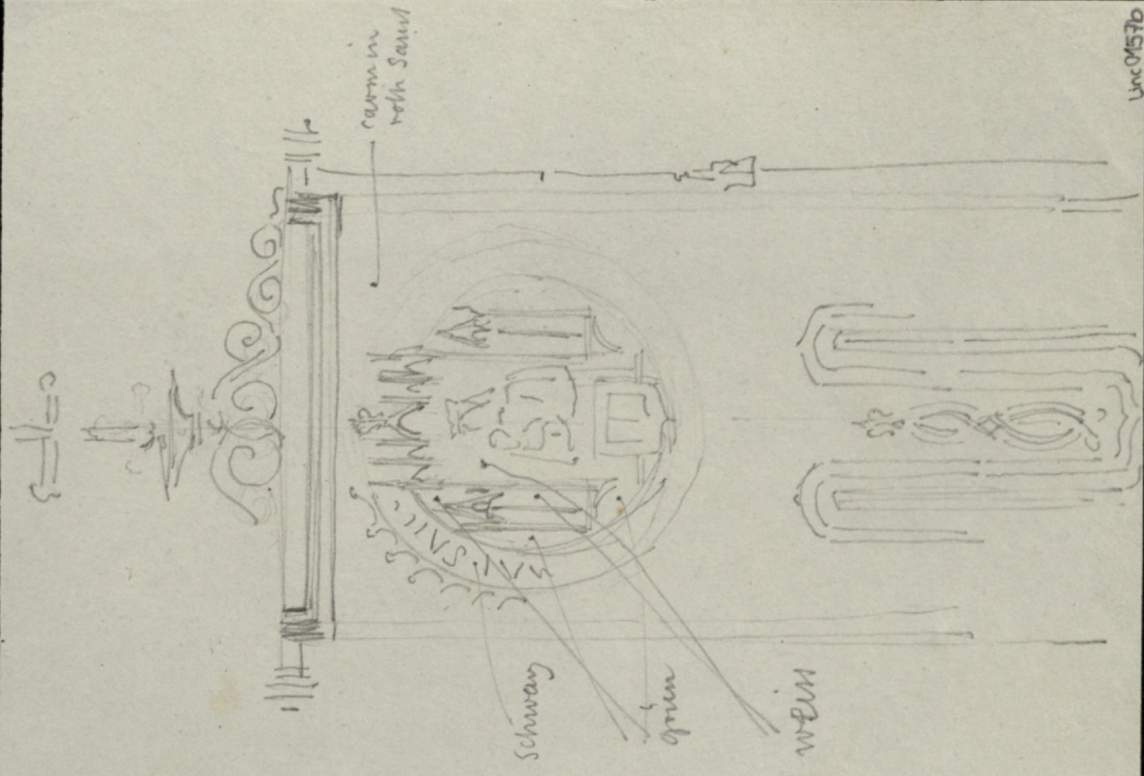
Lizenz: <https://creativecommons.org/licenses/by-sa/4.0/>
PURL: <https://digibus.ub.uni-stuttgart.de/viewer/image/1496387128257/1/>



Blue
Cyan
Green
Yellow
Red
Magenta

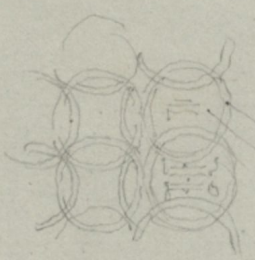
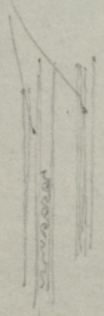


Colour & Grey Control Chart

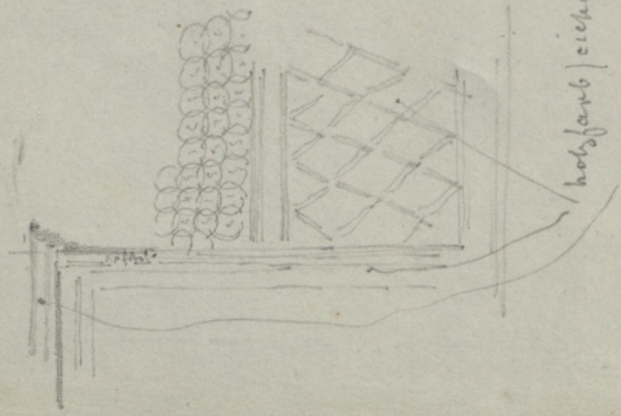


Luc 0157b

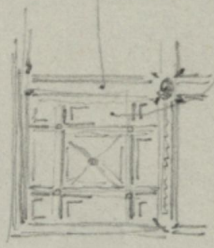
holzfarb.



gold
weing. - das
Den Namen aus
de Weispung geich
enthalten. - weiss
mit gold u farbig
Theil.

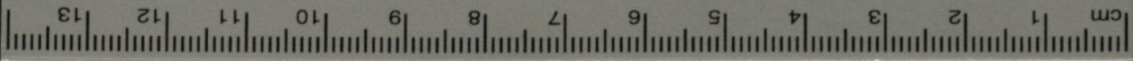


holzfarb zeichen



di Dal Ken di
Cassatundeke hofjart
theils m. Ornament (am Paris)
weichen hofjart an gebild
di Grund weiss gellich
mit braungelb. Dessen.

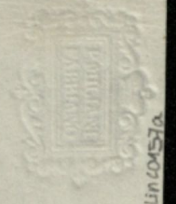




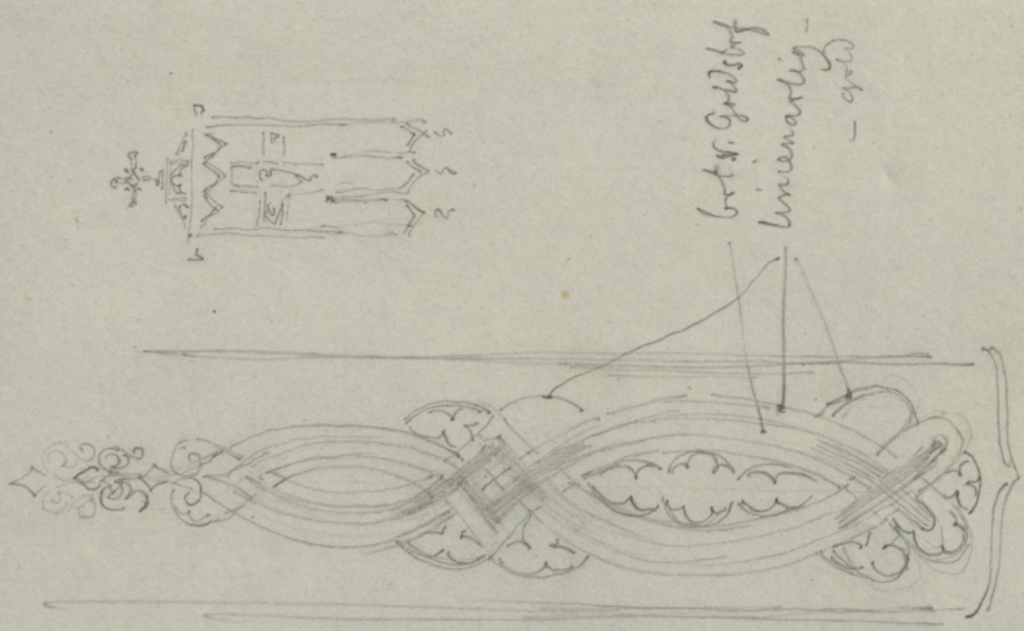
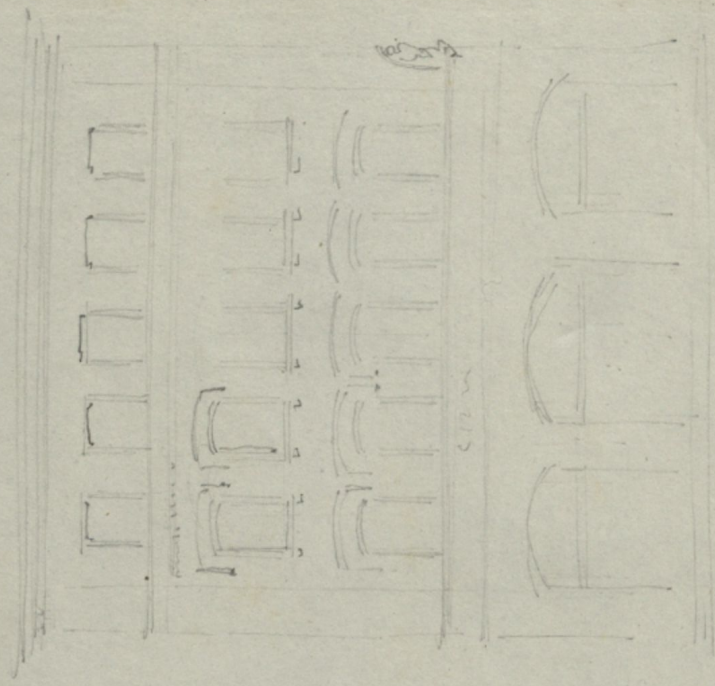
White
Grey 1
Grey 2
Grey 3
Grey 4
Black



Colour & Grey Control Chart



157
UNIVERSITY



bet. v. Goldstuf
linenartig -
- gold

