

**Persistenter Identifier:** 1543223852681\_1

**Titel:** Die östlichen schwäbischen Landesteile

**Autor:** Wintterlin, Friedrich

**Ort:** Stuttgart

**Maße:** 12, 888 Seiten

**Datierung:** 1910

**Signatur:** 1J 1030-1

**Strukturtyp:** volume

**Lizenz:** <https://creativecommons.org/licenses/by-sa/4.0/>

**PURL:** [https://digibus.ub.uni-stuttgart.de/viewer/image/1543223852681\\_1/1/](https://digibus.ub.uni-stuttgart.de/viewer/image/1543223852681_1/1/)

**Abschnitt:** color\_chart

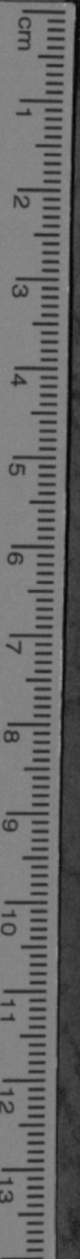
**Strukturtyp:** color\_chart

**Lizenz:** <https://creativecommons.org/licenses/by-sa/4.0/>

**PURL:** [https://digibus.ub.uni-stuttgart.de/viewer/image/1543223852681\\_1/913/LOG\\_0023/](https://digibus.ub.uni-stuttgart.de/viewer/image/1543223852681_1/913/LOG_0023/)

# Colour & Grey Control Chart




Blue	Cyan	Green	Yellow	Red	Magenta
White	Grey 1	Grey 2	Grey 3	Grey 4	Black



nur  
 LS

N12<106660108093



Univ.-Bibl. Stuttgart

